



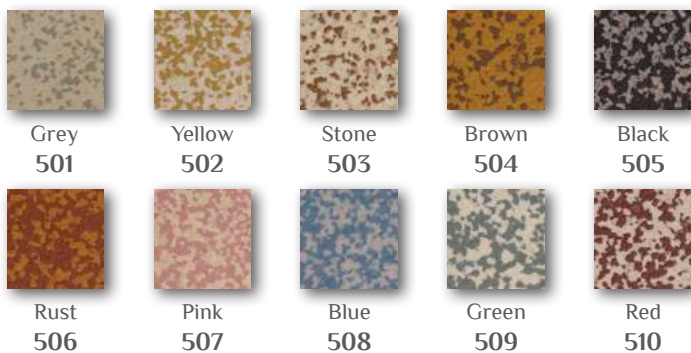
FRANCE 1894

• WINCKELMANS •
MANUFACTURE DE CARREAUX CÉRAMIQUES

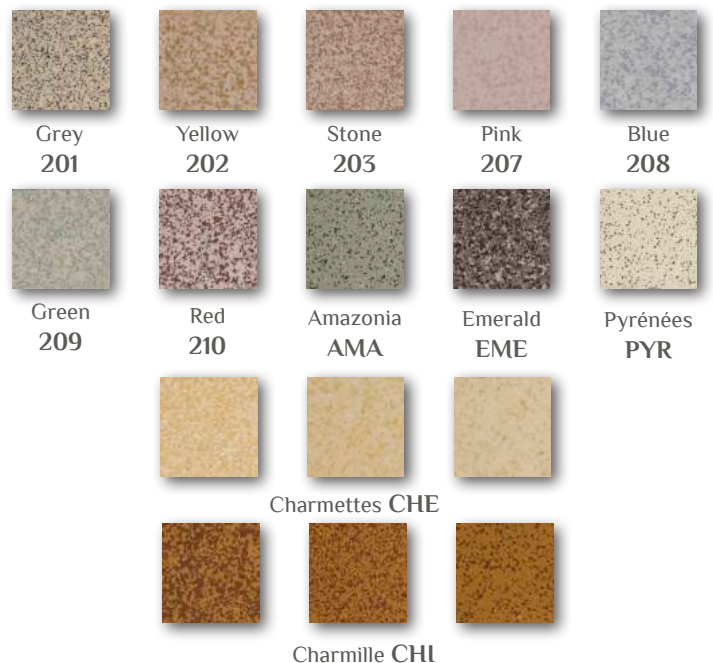
Plain colours



Porphyry

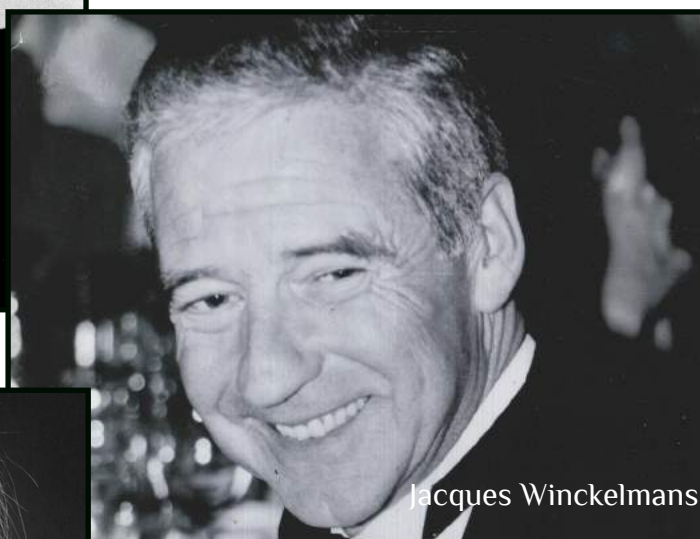
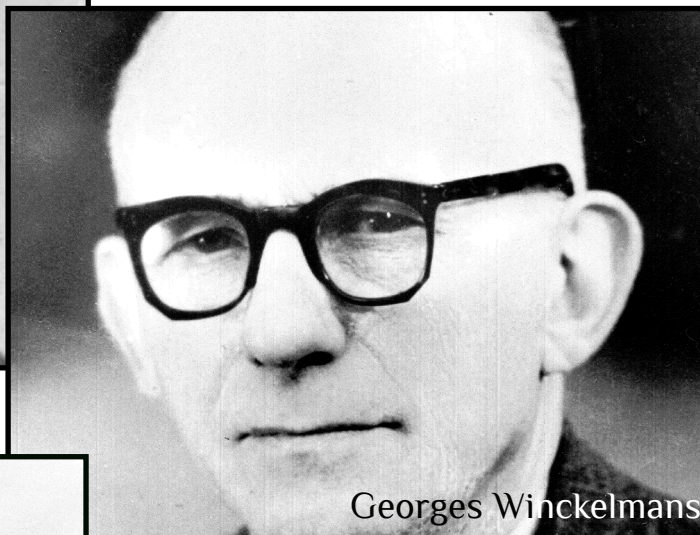
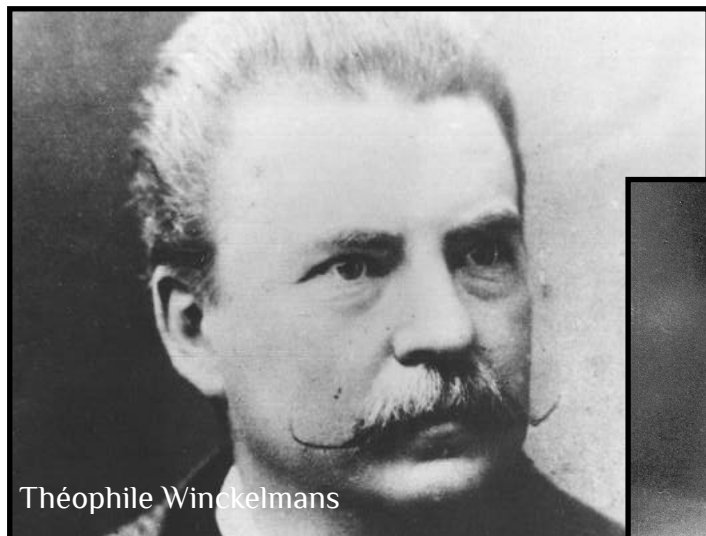


Speckled



CONTENTS

TILES FROM GENERATION TO GENERATION.....	4
A FAMILY FACTORY BETWEEN TRADITION AND MODERNITY.....	6
THE PORCELAIN STONEWARE AT THE HEART OF OUR PRODUCT.....	8
SHAPES, SIZES AND FORMAT TABLE.....	10
SQUARES.....	12
DECORATED TILES/ENCAUSTICS.....	18
RECTANGLES.....	28
HEXAGONS.....	32
OCTAGONS AND DOTS.....	38
TRIANGLES.....	44
ROUNDS.....	46
DIAMONDS.....	48
MOSAIC PATTERNS.....	50
DESIGNS AND BORDERS.....	54
ACCESSORIES AND ANTISLIP TILES.....	68
BESPOKE PROJECTS.....	72
TECHNICAL DATA.....	74
QUALITY AND ANTISLIP STANDARDS.....	75
PACKAGING INFORMATION.....	76
LAYING AND MAINTENANCE ADVICE.....	78
IMPORTANT INFORMATION.....	79



Tiles from generation to generation

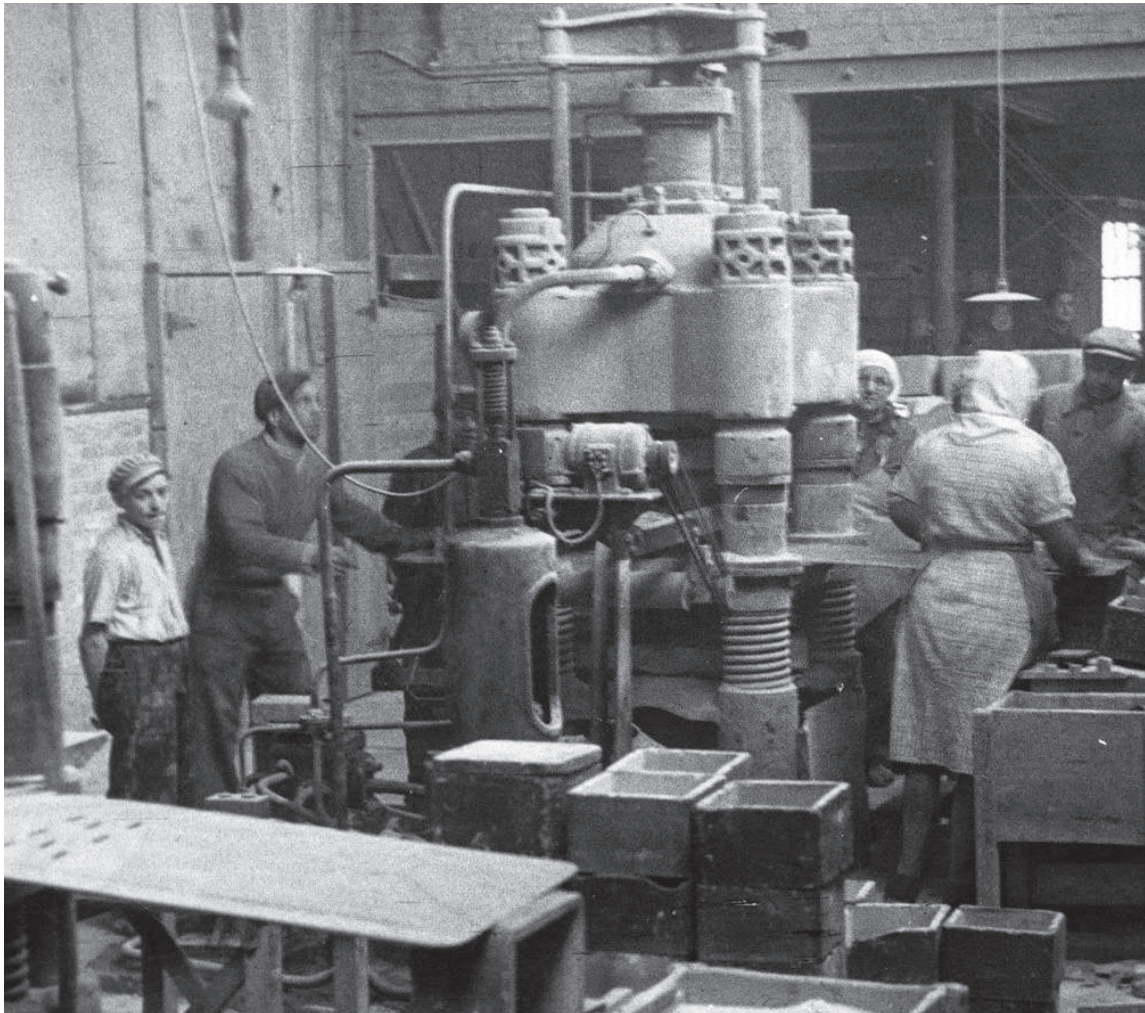
Everything started for Théophile Winckelmans in 1894 when he opened an unglazed tile factory in Lomme in Northern France.

Five generations have followed since then, sustaining the legacy and know-how of the founder whilst meeting the challenges specific to each era: the World Wars and bombing of the factory along with globalisation and the need to open up to export are some of the challenges successfully overcome which have allowed the factory to remain on its original site for so many years.

After the opening up to the world and rapid development of our exports initiated by Jacques Winckelmans in the 1990s, the beginning of the 2000s was a difficult time for the factory which had to make some radical changes. The fifth generation currently at the helm thus decided on a major change of gear, with major investment in production and a move upmarket for the product. Our company has now achieved global recognition for the quality of its tiles and gained the trust of prestigious names in such diverse fields as haute couture and restoration as well as of known personalities.

Today, it is Barbara, Jacques daughter, who is carrying on with the legacy of our product and maintaining the family values that are key to the survival of our tiles.

*Sans Passim
rien ne dure !
Barbara W*



Key Dates...

1894

Beginning of industrial production on our present-day site (paving and unglazed fully vitrified tiles).

1940

Partial destruction of the factory during a WWII bombing.

1944

The factory buildings are razed (except for the kilns), meaning a slow and difficult recovery.

1958

Electric kilns are installed.

A family factory between tradition and modernity

Our Lomme factory has been operational for over 120 years. It now employs 120 people, most of whom have spent the bulk of their careers within the factory. These men and women, their full involvement and their knowledge of our product form the basis for our success and are the caretakers of the traditional know-how we have inherited and which we have a duty to preserve.

But preserving it is not enough: in an era of multiple challenges, it is essential that our factory moves with the times and finds a balance between respect for tradition and a modernised production tool.

We can therefore today use this atypical marriage of tradition and innovation to offer an authentic, quality product with nevertheless the flexibility of new technologies in terms of production times and customisation.

1960

Industrial grinders are installed.

1970

Automatic presses are installed and the workshops are renovated.

2007

Decize Céramiques buy-out.

2012

A gas kiln is installed and the production tool is modernised.



The porcelain stoneware at the heart of our product

A Natural and Authentic Product

Our fully vitrified unglazed fine tiles are made of natural materials (mainly clay) from France and Europe which produce a non-porous tile, the ideal, versatile product for all types of residential, commercial and industrial projects.

Easy maintenance and excellent stain resistance thanks to near-zero porosity

The absorption rate of under 0.5% of our fully vitrified tiles makes them stain-resistant and they can therefore be used in the dampest locations with no fear of them changing colour or appearance. This low porosity makes them easy to clean and renders any post-installation treatment or specific cleaning products superfluous. They can be used in such varied projects as professional kitchens, public swimming pools and so on.

Through-body colours and patterns

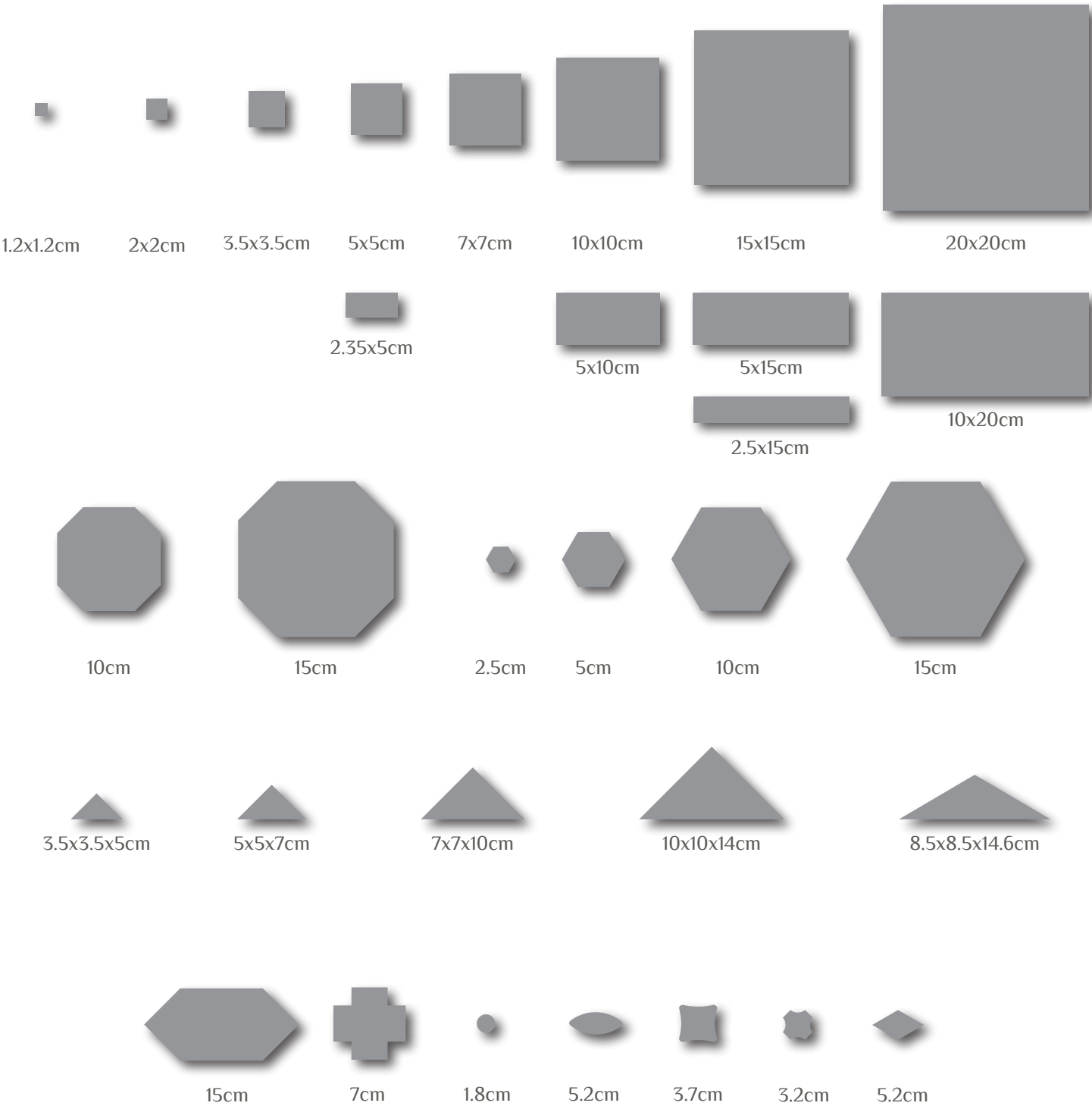
Our tiles are through-body, which gives them an identical colour throughout their thickness and a service life of several centuries thanks to the lasting shades and patterns.

A lasting, versatile product thanks to its exceptional technical characteristics

Fired at a temperature close to 1,200 degrees Celsius, our unglazed tiles are compact and have excellent technical characteristics. They are robust enough to be used commonly outside, they are heat- and frost-resistant and suitable for intensive use areas.

*See Page 78 for detailed technical information

Formats



Format table

Format	Size (in cm)	Available Thicknesses (in cm)	Available assembled on sheets	Available in loose packaging
Square	1.2x1.2	0.38 / 0.5	◆	◆
	2x2	0.38	◆	◆
	3.5x3.5	0.9	◆	◆
	5x5	0.5 / 0.9	◆	◆
	7x7	0.9	◆	◆
	10x10	0.9 / 1.1	◆	◆
	15x15	0.9		◆
	20x20	0.9		◆
Rectangle	2.35x5	0.5	◆	◆
	2.5x15	0.9	◆	◆
	5x15	0.9	◆	◆
	5x10	0.9	◆	◆
	10x20	0.9		◆
Hexagon	2.5x2.5	0.38 / 0.9	◆	◆
	5x5	0.5	◆	◆
	10x10	0.9	◆	◆
	15x15	0.9		◆
Octagon	10x10	0.9	◆	◆
	15x15	0.9		◆
Triangle	3.5x3.5x5	0.9		◆
	5x5x7	0.9		◆
	7x7x10	0.9		◆
	10x10x14	0.9		◆
	8.5x8.5x14.6	0.9	◆	◆
Round	1.8	0.38 / 0.9	◆	◆
Cross	7x7	0.9	◆	◆
Diamond	5	0.5	◆	◆
Shuttle	15x7	0.9	◆	◆

Squares

1.2x1.2 / 2x2 / 3.5x3.5 / 5x5 / 7x7 / 10x10 / 15x15 / 20x20cm

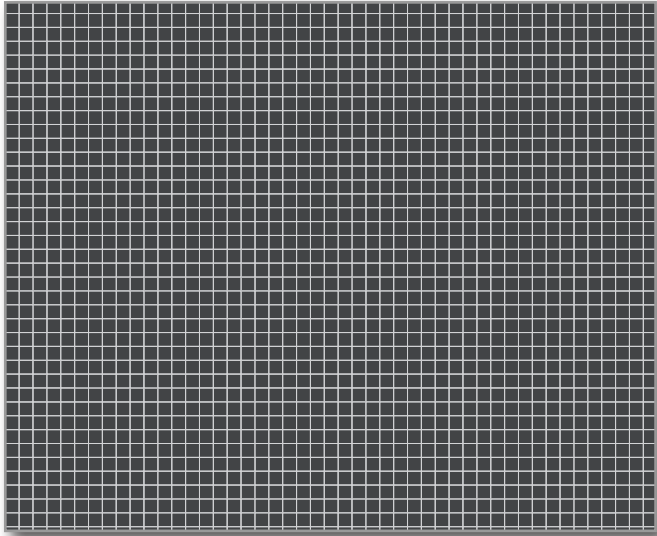


❖ Available sizes and thicknesses

- ◆ 1.2x1.2cm - 3.8/5mm
- ◆ 2x2cm - 3.8mm
- ◆ 3.5x3.5cm - 9mm
- ◆ 5x5cm - 5/9mm
- ◆ 7x7cm - 9mm
- ◆ 10x10cm - 9mm
- ◆ 15x15cm - 9mm
- ◆ 20x20cm - 9mm

❖ Available surface types

- ◆ Smooth (all sizes)
- ◆ Antislip (5x5 and 10x10cm sizes, please refer to Page 71)



PLAIN COLOUR

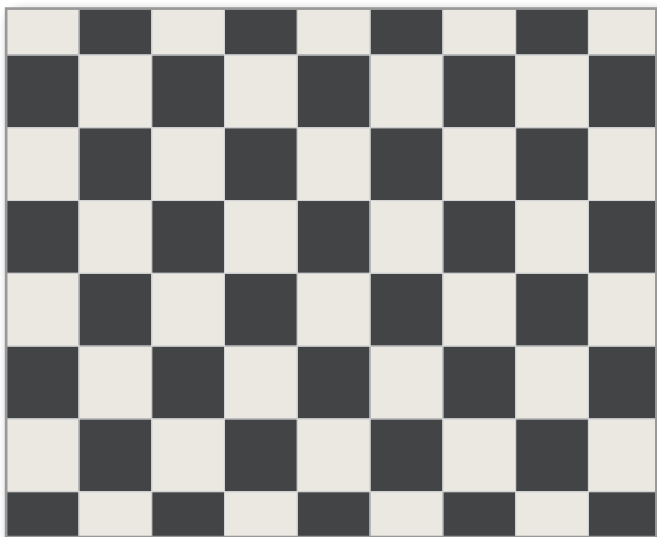
Composition:

- ◆ Black 2x2cm

Assembled on sheets of 30.8x30.8cm

Straight or Brickbond patterns

Two patterns are possible: the straight pattern as illustrated by the example on the left or the brickbond pattern.



CHECKER

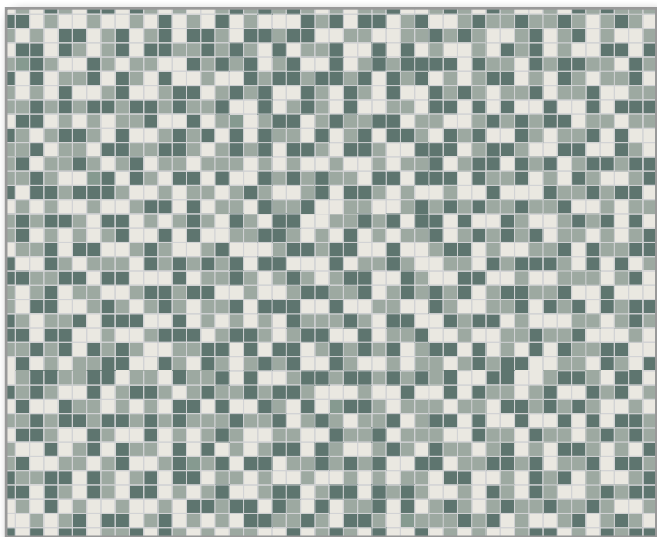
Composition:

- ◆ Black 10x10cm
- ◆ Super White 10x10cm

Loose or assembled on sheets of 30.7x30.7cm

45° angle installation

Use an angle of 45° when installing this pattern for an alternative look.

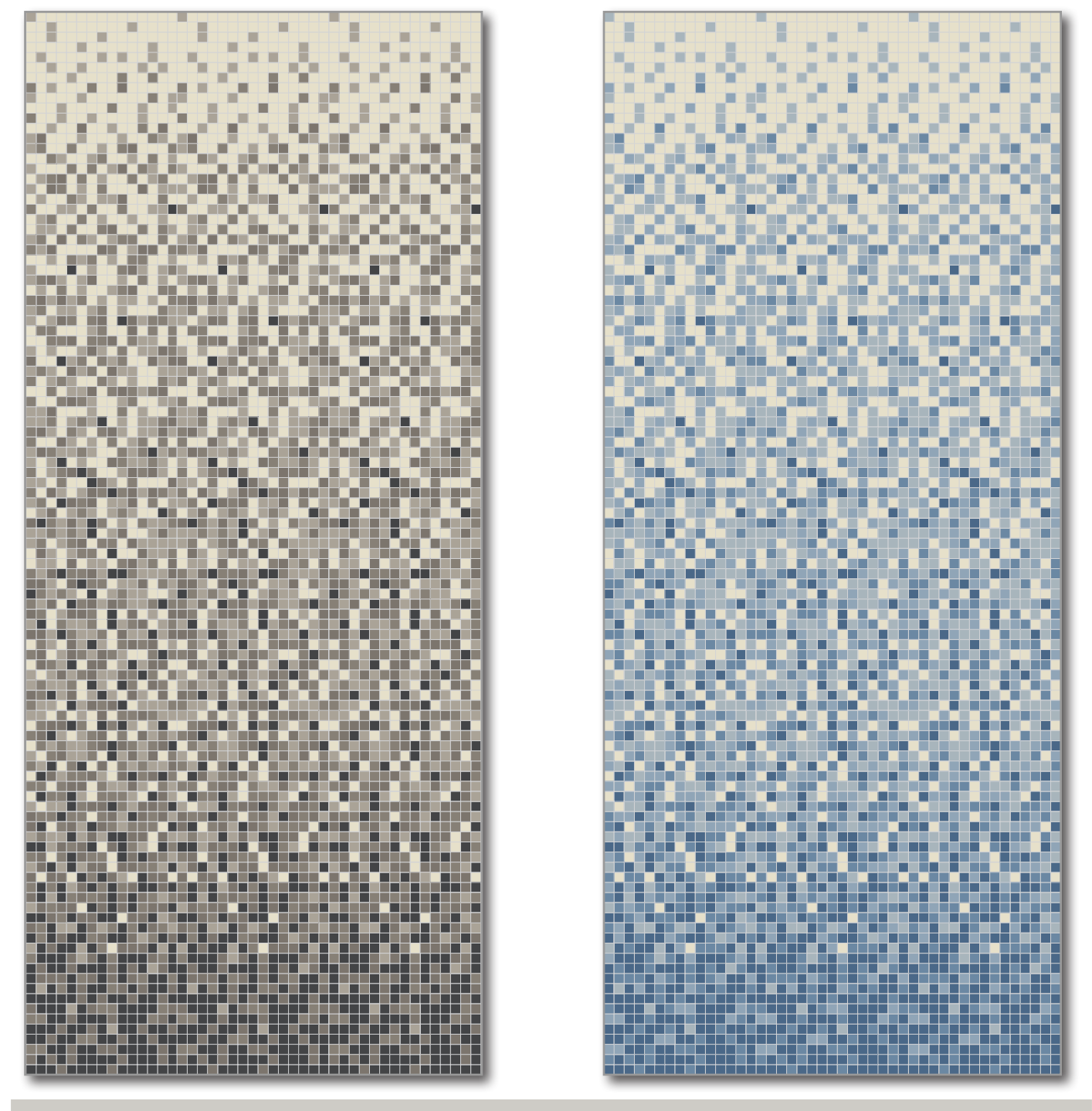


RANDOM MIX

Composition:

- ◆ 34% Super White 2x2cm
- ◆ 33% Pale Green 2x2cm
- ◆ 33% Dark Green 2x2cm

Assembled on sheets of 30.8x30.8cm



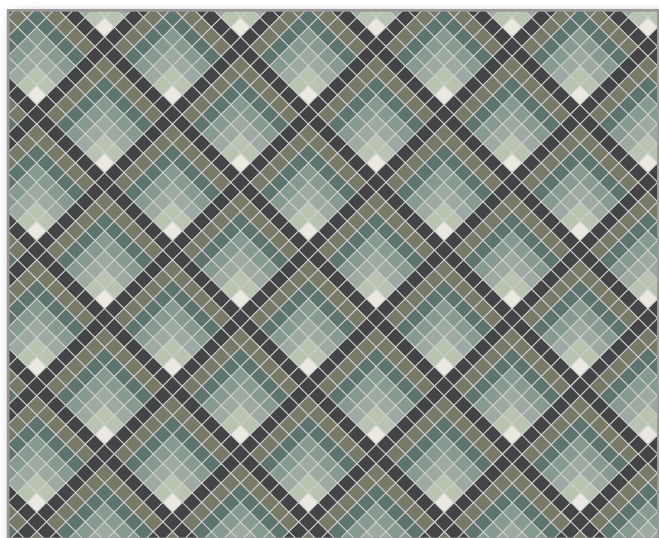
2X2CM GRADIENTS

Composition:

- ◆ Gradient #1 (left-hand side): Black 14% - Charcoal 16% - Grey 19% - Pale Grey 22% - White 29%
- ◆ Gradient #2 (right-hand side): Blue Moon 14% - Dark Blue 16% - Blue 19% - Pale Blue 22% - White 29%

Customisation of colours

Gradients are tailor-made based on the surface area to be tiled. Their composition can be customised from our colour range. Other standard models are available on request.



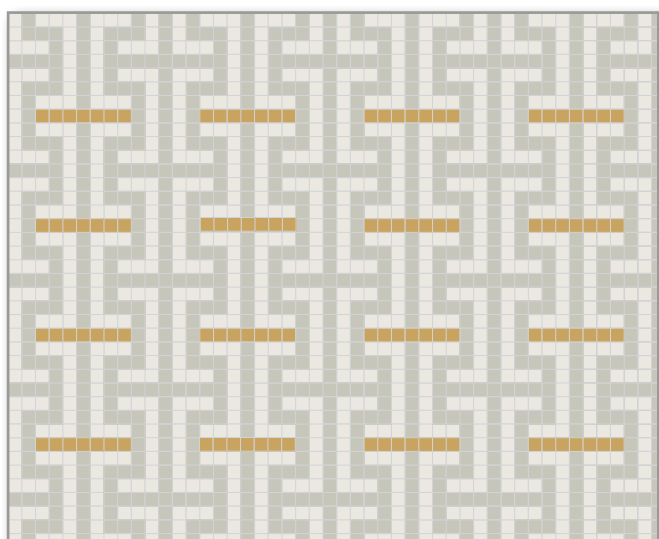
2X2CM DESIGN

“GRID”

Composition:

- ◆ Black 2x2cm
- ◆ Australian Green 2x2cm
- ◆ Dark Green 2x2cm
- ◆ Green 2x2cm
- ◆ Pale Green 2x2cm
- ◆ Pistachio 2x2cm
- ◆ Super White 2x2cm

Assembled on sheets of 30.8x30.8cm



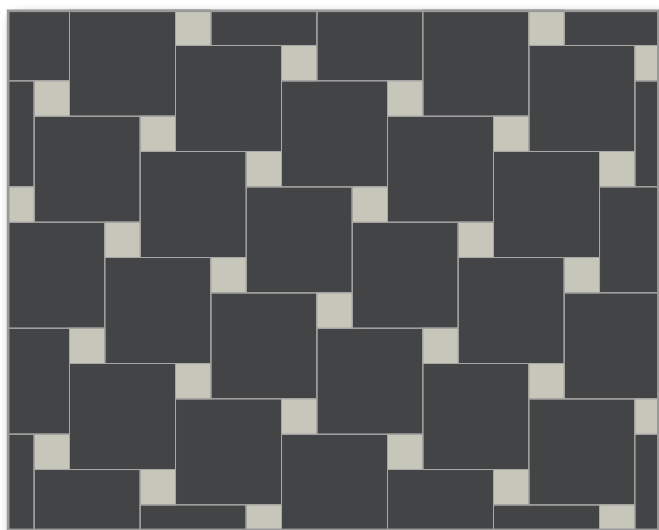
2X2CM DESIGN

“COUTURE”

Composition:

- ◆ Pearl Grey 2x2cm
- ◆ Super White 2x2cm
- ◆ Yellow 2x2cm

Assembled on sheets



15X15CM SQUARES

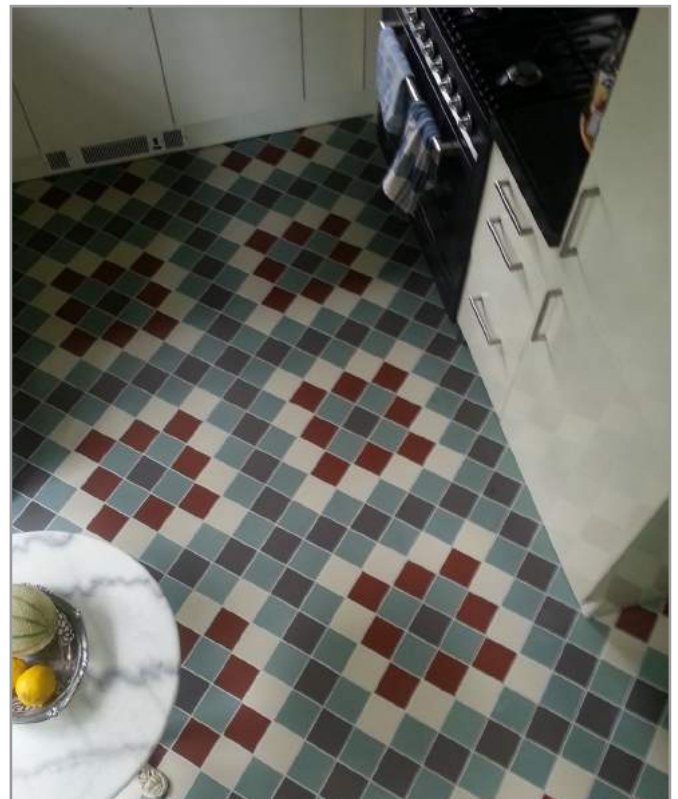
+ 5X5CM DOTS

Composition/M2:

- ◆ 40 Pcs of Black 15x15cm
- ◆ 40 Pcs of Pearl Grey 5x5cm Dots

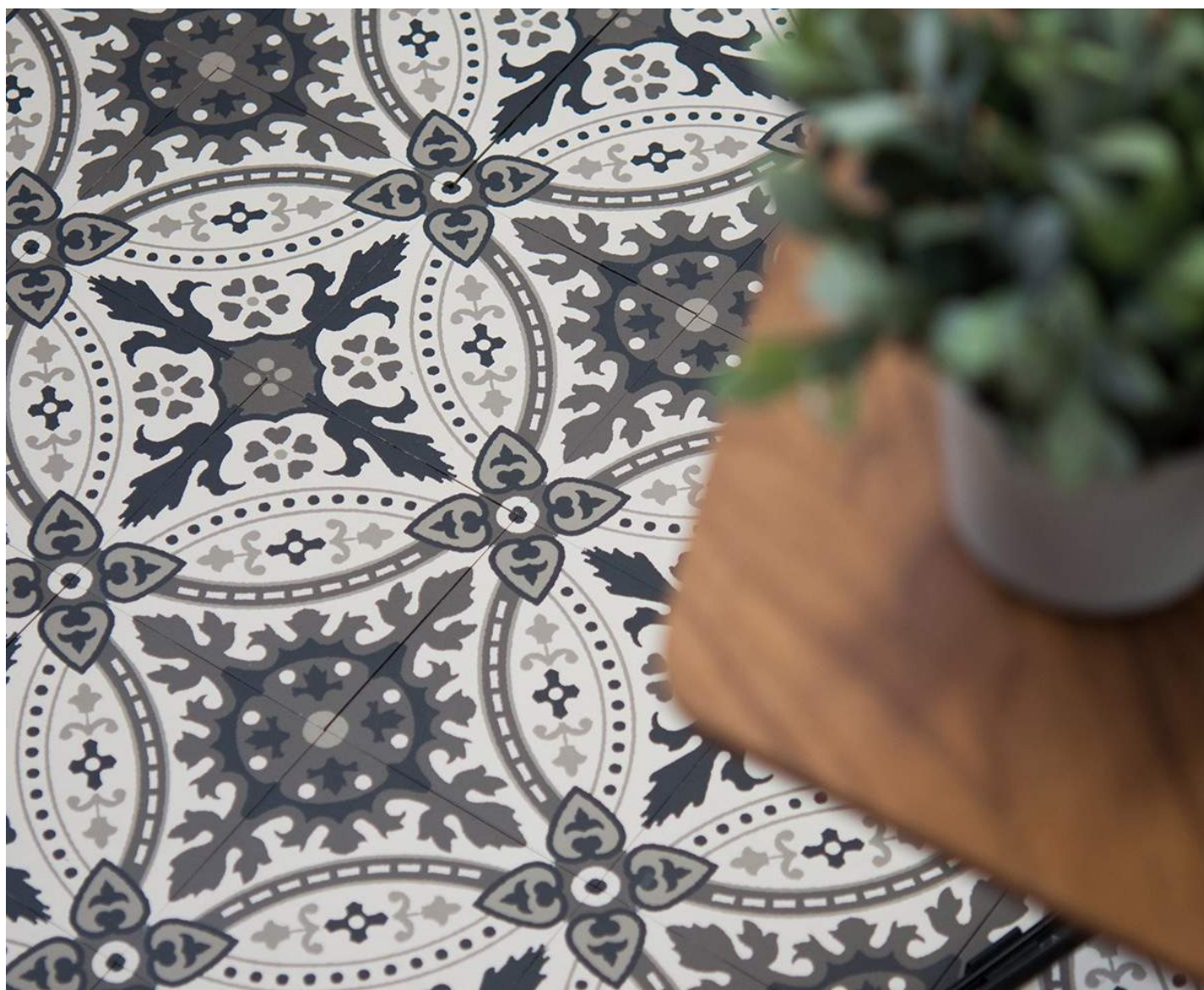
15x15cm squares and dots are provided loose





Decorated Tiles

5x5 / 7x7 / 10x10 / 15x15cm



❖ Available sizes and thicknesses

- ◆ 5x5cm - 9mm
- ◆ 7x7cm - 9mm
- ◆ 10x10cm - 9mm
- ◆ 15x15cm - 9mm

Winckelmans decorated tile

Hand-made

To perpetuate our know-how, our decorated tiles are entirely hand-pressed as has always been our tradition. Partitioning is a totally manual process which makes each item unique. Winckelmans has used this method for more than one hundred years, with special care paid to the preservation of the material.

Very easy to maintain and highly resistant

Unlike certain types of decorated tile, the Winckelmans decorated tile has near-zero porosity, which makes it easy to maintain and renders it especially stain-resistant. Nor does it require the use of a specific cleaning product. In addition, as pressing is partitioned over the entire tile thickness, the colours and patterns go right through the tile guaranteeing a hardwearing pattern over time. Given all these qualities, our decorated tile is therefore just as versatile as our plain-colour range and can therefore be used inside and out, in dry or damp environments, in standard housing or industrial premises with intensive use.

Customisation and reproduction of models

The combination of our know-how and traditional manufacturing processes with the latest computer technologies makes it possible for us to reproduce all your existing patterns or to create a totally unique decorated tile based on a specific pattern (logo, drawing). We can therefore satisfy all your needs for your renovation plans or most original projects!



Pearl Grey / Charcoal / Black / White

Lille



LIN/BAU/NOI/ANT



NOI/PER/GRU/BAS



Pale Blue / Chocolate / White / Linen

Vieux-Lille



GRP/PER/GRU/NOI



BAS/ANT/PER/BEU



Black / Red / Ontario

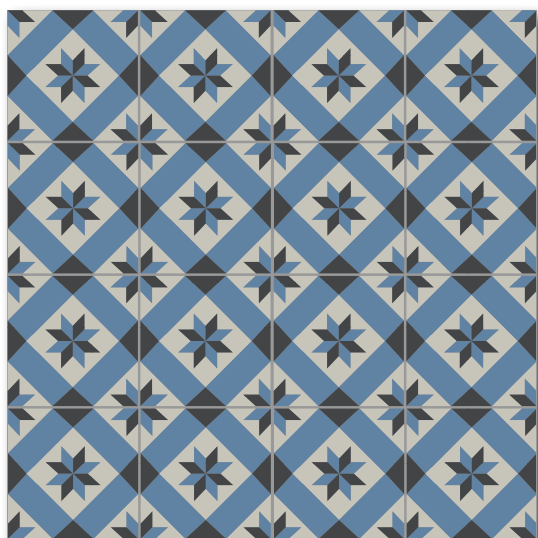
Deauville



BEF/BEP/BAS



BAS/PER

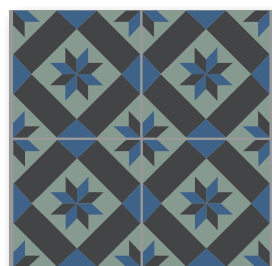


Black / Dark Blue / Pearl Grey

Séville



NOI/BAS/GRP

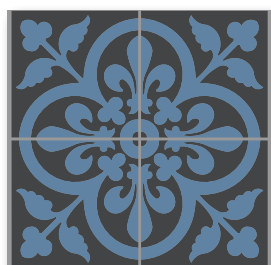


BEN/NOI/VEU



White / Black

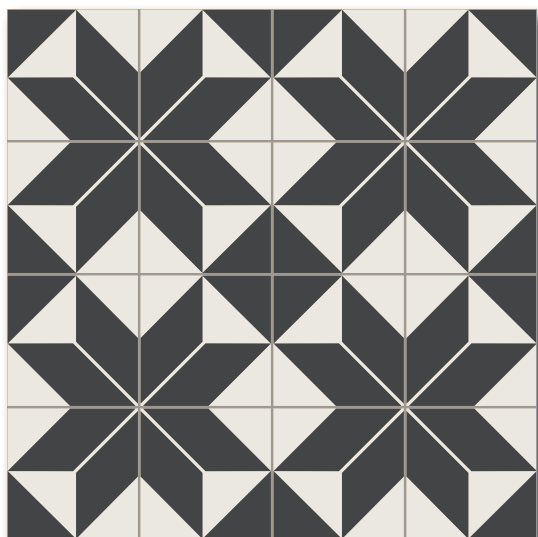
Anvers



NOI/BEF

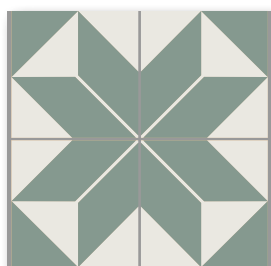


LIN/ANT

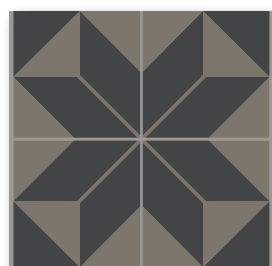


Super White / Black

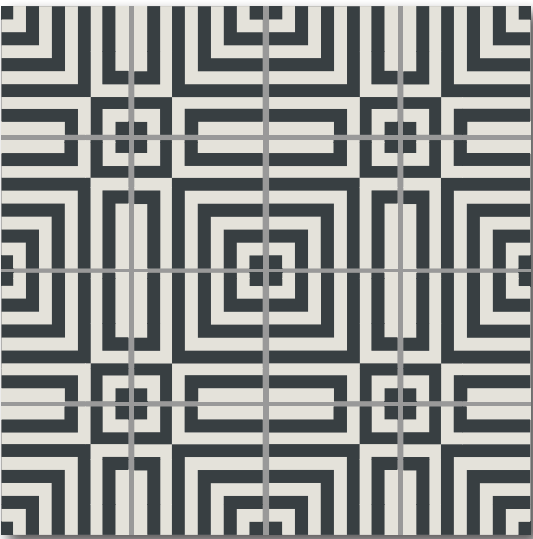
Edelweiss



BAS/VEU

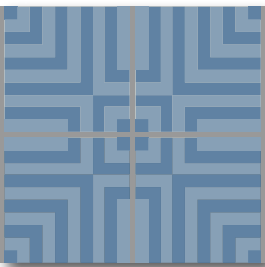


ANT/NOI

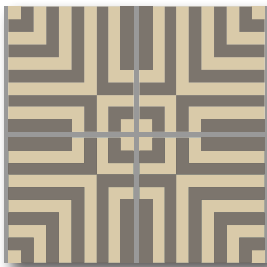


Black / Super White

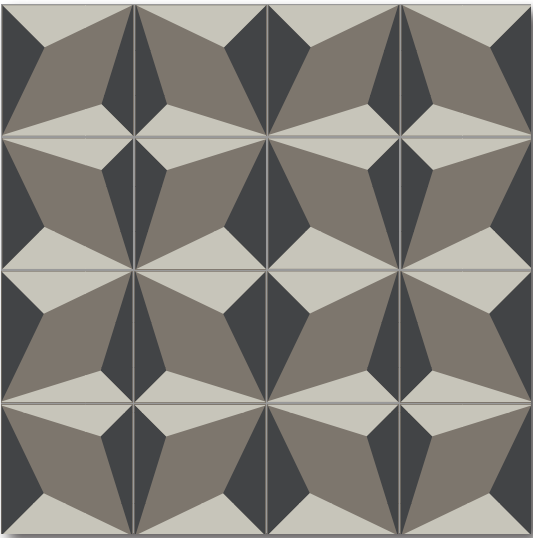
Madrid



BEF/BEU



ANT/IVO

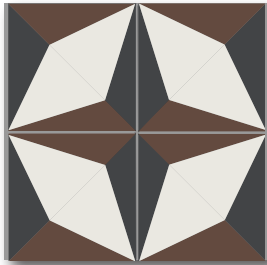


Black / Pearl Grey / Charcoal

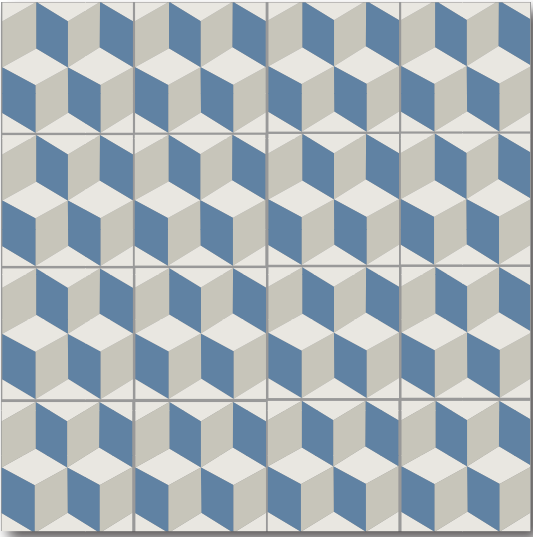
Berlin



NOI/BAU/JAU

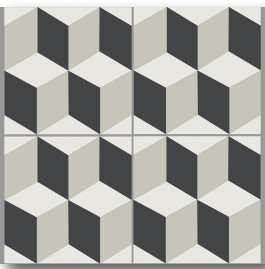


NOI/CHO/BAS

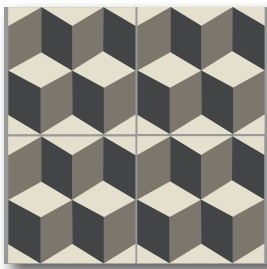


Dark Blue / Super White / Pearl Grey

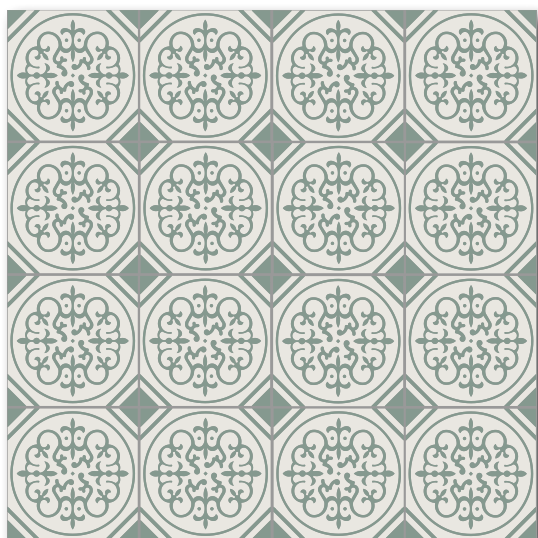
Trompe l'œil



BAS/PER/NOI

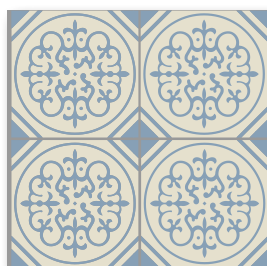


BAU/NOI/ANT



Super White / Green

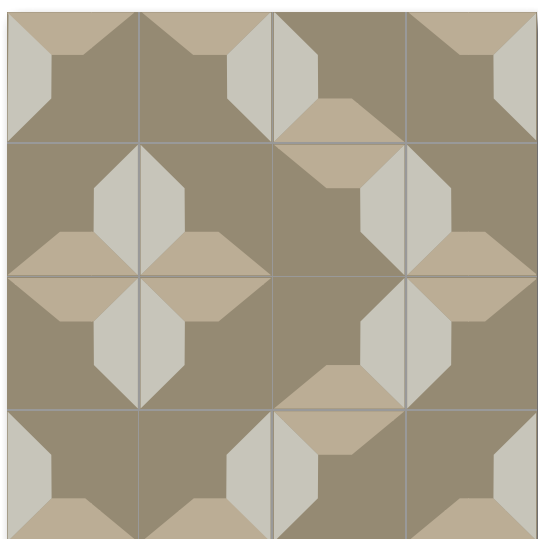
Bruxelles



BAU/BEU

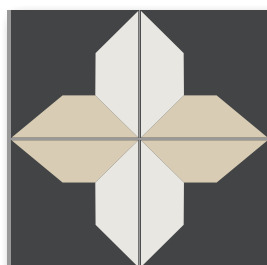


NOI/BAS

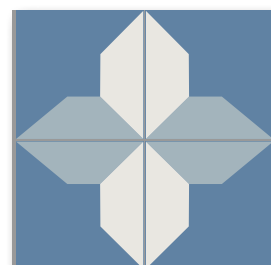


Pearl Grey / Linen / Mole

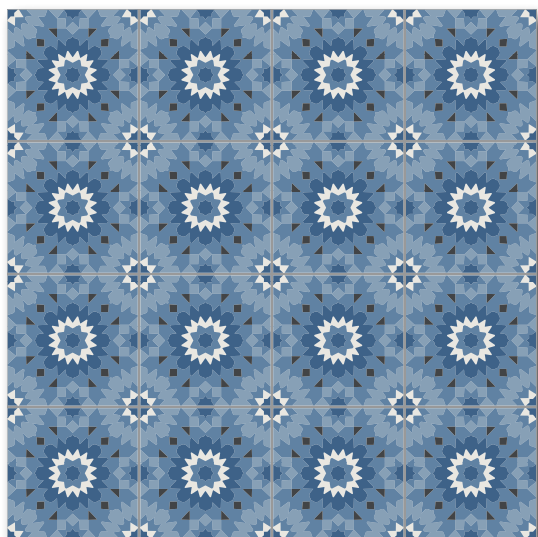
Rome



ONT/BAS/NOI

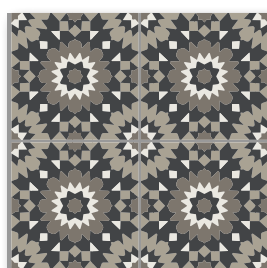


BEF/BEP/BAS



Blue Moon / Dark Blue / Blue / Super White / Black

Amsterdam



NOI/BAS/ANT/GRP



NOI/BAS/ONT/BEP/JAU

Patchworks

15x15cm



Reference #1 - Super White / Black / Grey



Reference #2 - Linen / White / Mole / Ontario

❖ Packaging

The patchworks below comprise 15x15 cm decorated tiles supplied in bulk in boxes of sixteen tiles (0.36 m²) of different references and/or shades. You are free to use the models below for installation or to arrange the tiles differently.



Encaustic Tiles

5x5 / 7x7 / 10x10 / 15x15cm

5X5CM



ENC27



ENC01



ENC06

7X7CM



ENC02



ENC07



ENC08



ENC09



ENC12



ENC14

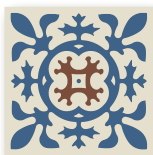


ENC15

10X10CM



ENC12



ENC02



ENC03



ENC04



ENC10



ENC11



ENC13



ENC FRI CN

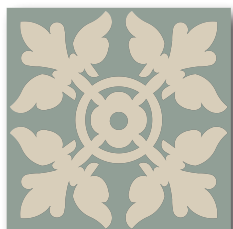


ENC FRI

15X15CM



ENC06



ENC26

Customisation of colours

Each section of tiles shown on this page can be customised using the range of plain colours. Customised renderings with the colours of your choice are available on request.

Creation or reproduction of patterns

The tiles shown in this catalogue are not exhaustive. Do not hesitate to send us your requests to reproduce existing patterns. It is even possible to create entirely new patterns!



^ Above: use of encaustics tiles for kitchen splashback.

v Below: use of encaustic tiles within assemblies (borders and floor designs).



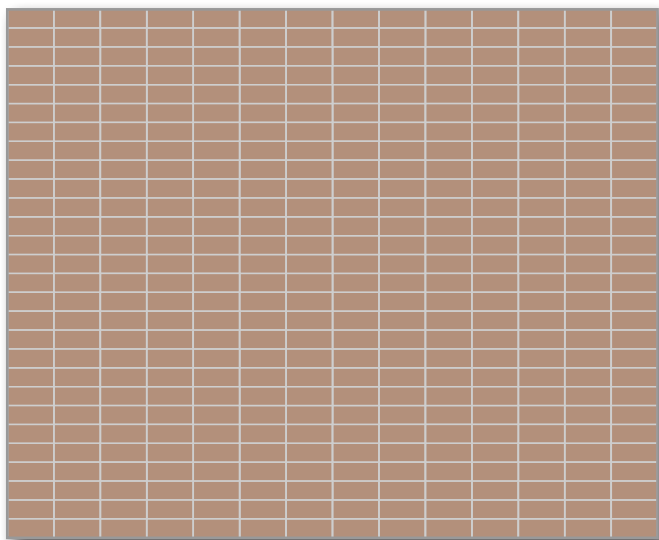
Rectangles

2.35x5 / 2.5x15 / 5x10 / 5x15 / 10x20cm



❖ Available sizes and thicknesses

- ◆ 2.35x5cm - 5mm
- ◆ 2.5x15cm - 9mm
- ◆ 5x10cm - 9mm
- ◆ 5x15cm - 9mm
- ◆ 10x20cm - 9mm / 18mm

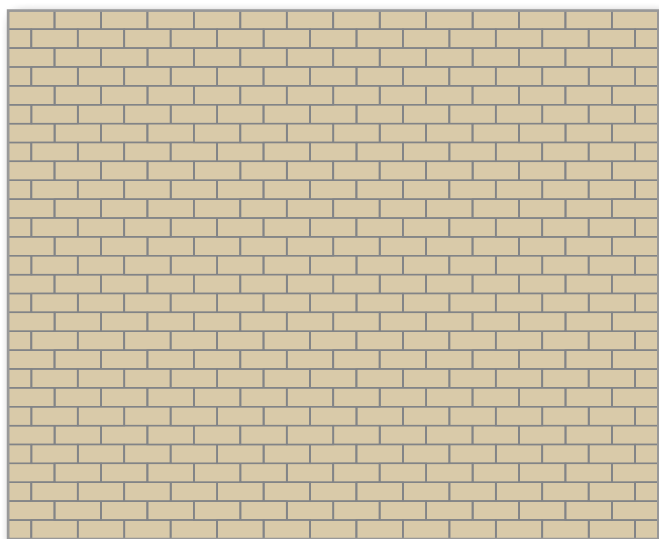


STRAIGHT 2.35X5CM RECTANGLES

Composition:

- ◆ Old Pink 2.35x5cm

Assembled on sheets of 31.8x31.8cm

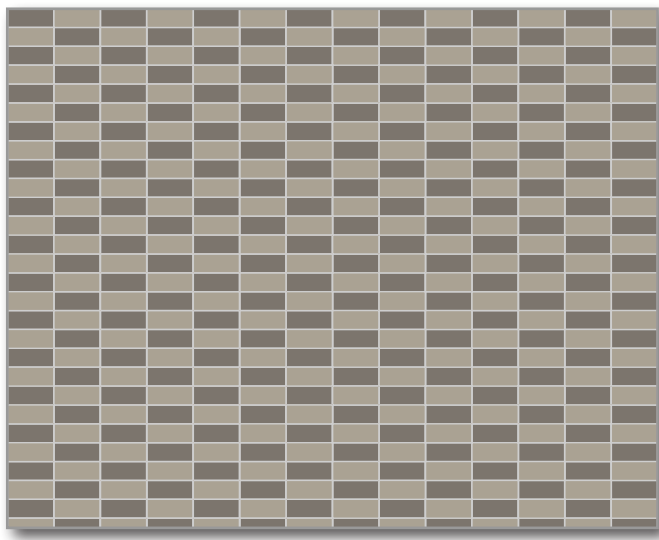


BRICKBOND 2.35X5CM RECTANGLES

Composition:

- ◆ Ivory 2.35x5cm

Assembled on sheets of 29.2x31.8cm

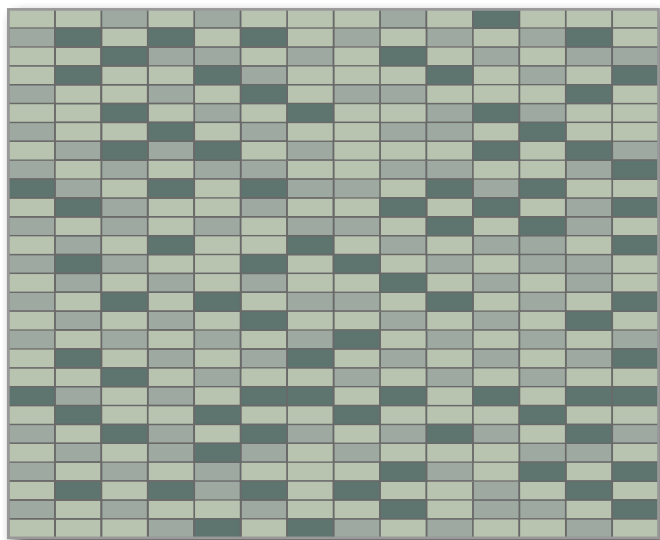


CHECKER PATTERN

Composition:

- ◆ Pale Grey 2.35x5cm
- ◆ Charcoal 2.35x5cm

Assembled on sheets of 31.8x31.8cm

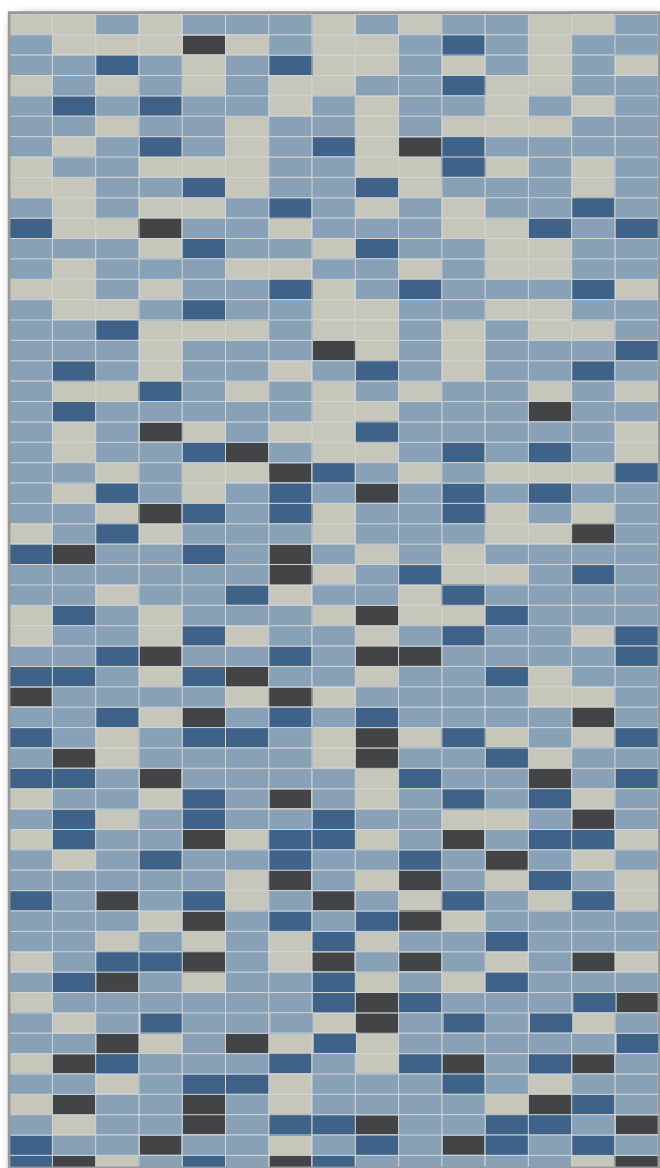


RANDOM MIX

Composition:

- ◆ 50% Super White 2.35x5cm
- ◆ 30% Pale Green 2.35x5cm
- ◆ 20% Dark Green 2.35x5cm

Assembled on sheets of 31.8x31.8cm



GRADIENT

Composition:

- ◆ 44% Blue 2.35x5cm
- ◆ 33% Blue Moon 2.35x5cm
- ◆ 17% Pearl Grey 2.35x5cm
- ◆ 6% Black 2.35x5cm

Assembled on sheets of 31.8x31.8cm



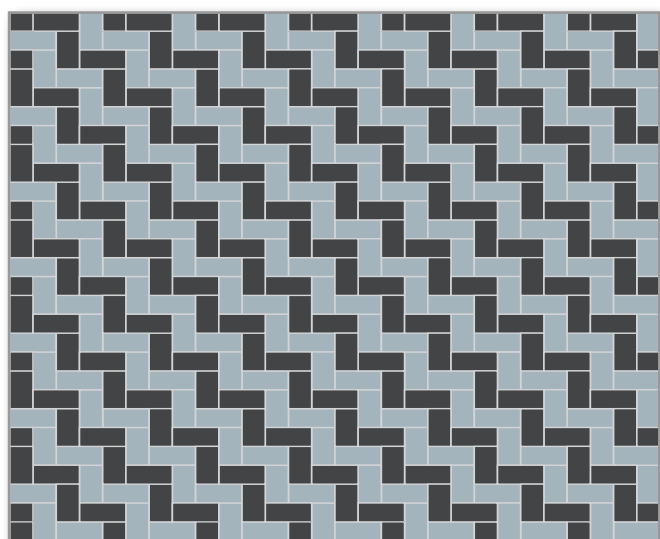
SPECIAL DESIGN

BD03

Composition:

- ◆ Super White 2.35x5cm
- ◆ Black 2.35x5cm
- ◆ Pearl Grey 2.35x5cm

Assembled on sheets of 29.2x31.8cm



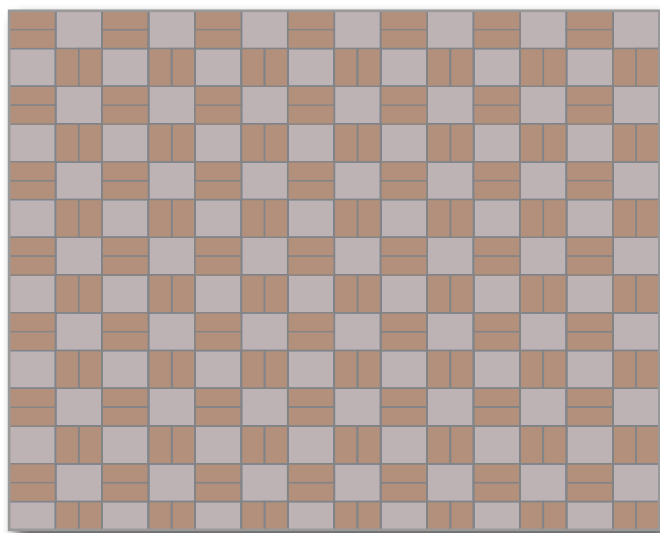
SPECIAL DESIGN

BA02 - "HERRINGBONE PATTERN"

Composition:

- ◆ Pale Blue 2.35x5cm
- ◆ Black 2.35x5cm

Assembled on sheets of 28.4x28.4cm



SPECIAL DESIGN

BC01

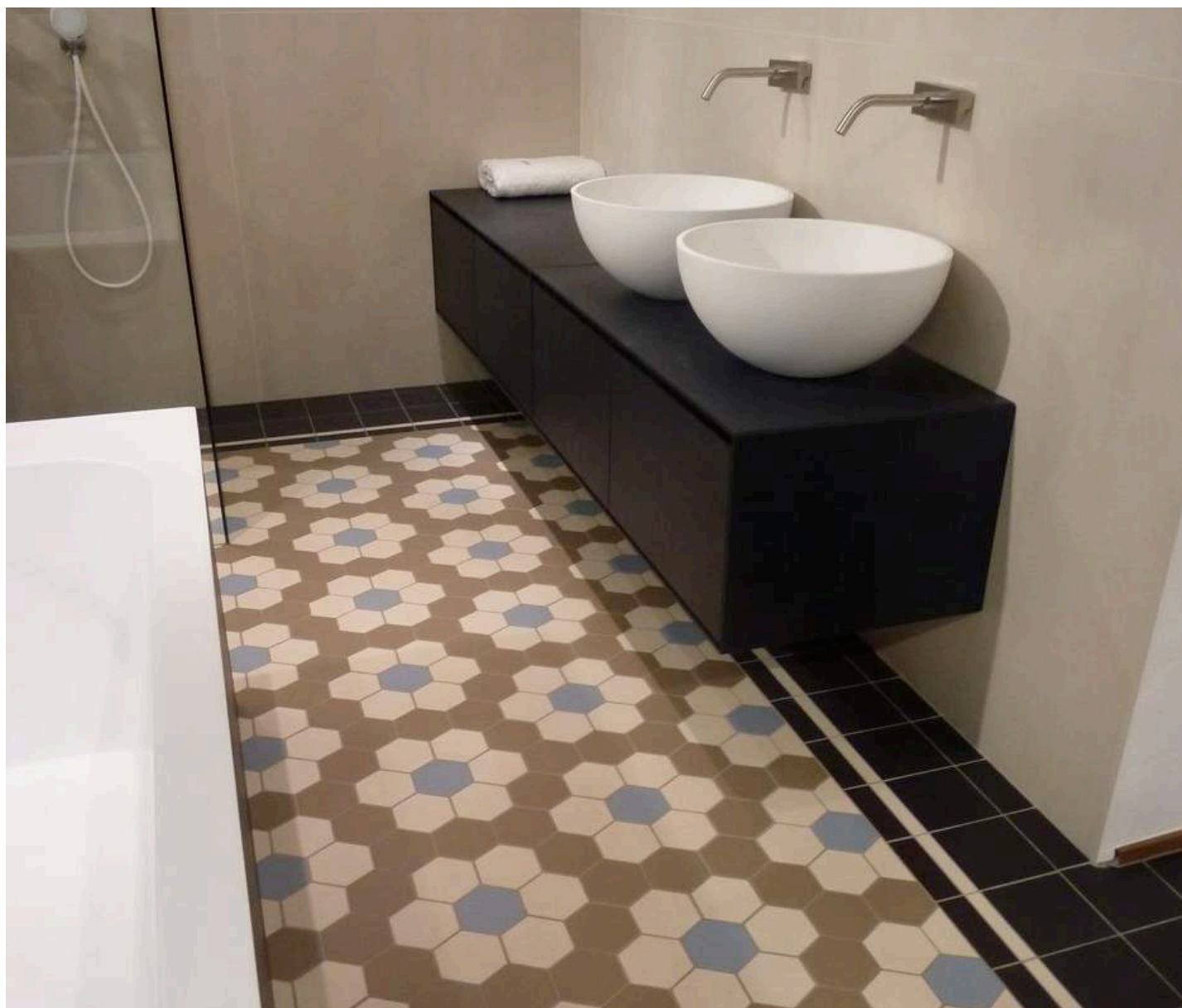
Composition:

- ◆ Old Pink 2.35x5cm
- ◆ Parma 5x5cm

Assembled on sheets of 31.8x31.8cm

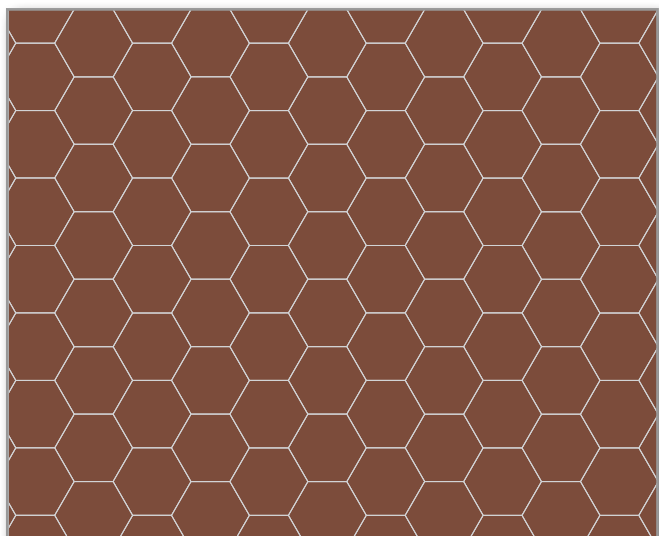
Hexagons

2.5x2.5 / 5x5 / 10x10 / 15x15cm



❖ Available sizes and thicknesses

- ◆ 2.5cm - 3.8/9mm
- ◆ 5cm - 5mm
- ◆ 10cm - 9mm
- ◆ 15cm - 9mm

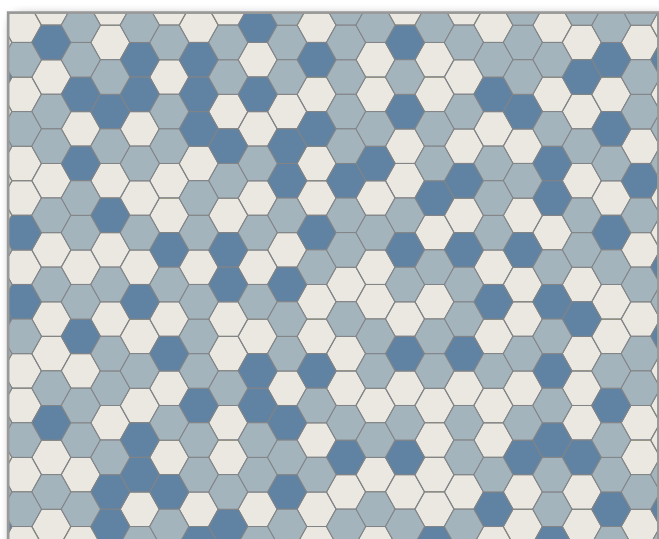


PLAIN COLOUR

Composition:

- ◆ 10cm Red Hexagons

Loose or assembled on sheets of 29.3x30.3cm

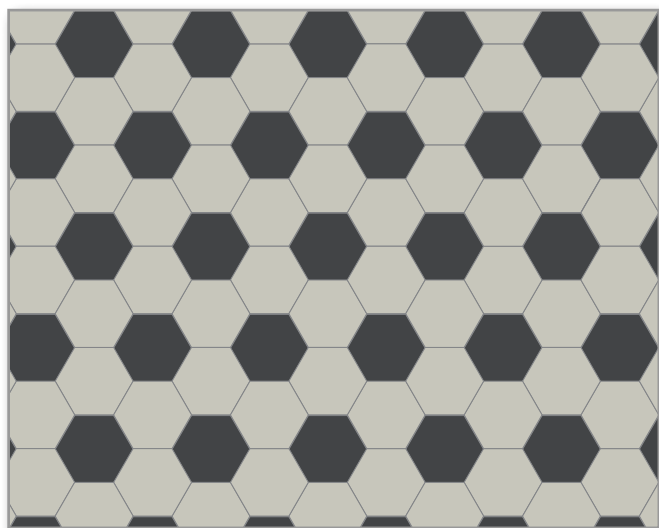


RANDOM MIX

Composition:

- ◆ 20% Dark Blue 5cm Hexagons
- ◆ 40% Pale Blue 5cm Hexagons
- ◆ 40% Super White 5cm Hexagons

Assembled on sheets of 28.1x29.5cm



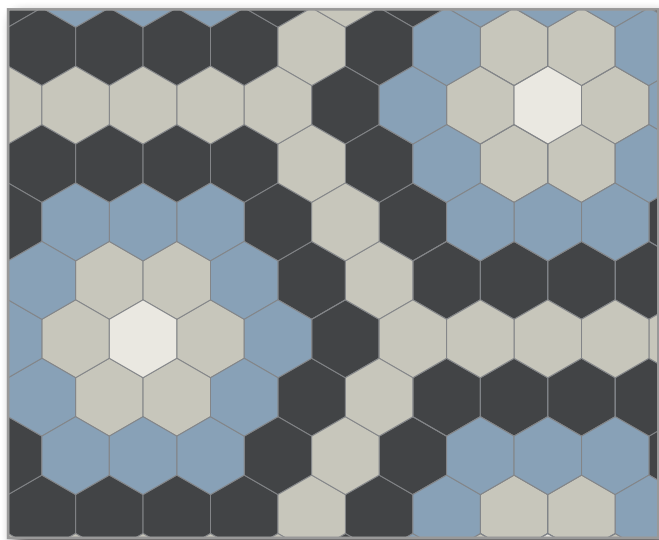
SPECIAL DESIGN

“SOCCER BALL”

Composition:

- ◆ Pearl Grey 10cm Hexagons
- ◆ Black 10cm Hexagons

Loose or assembled on sheets



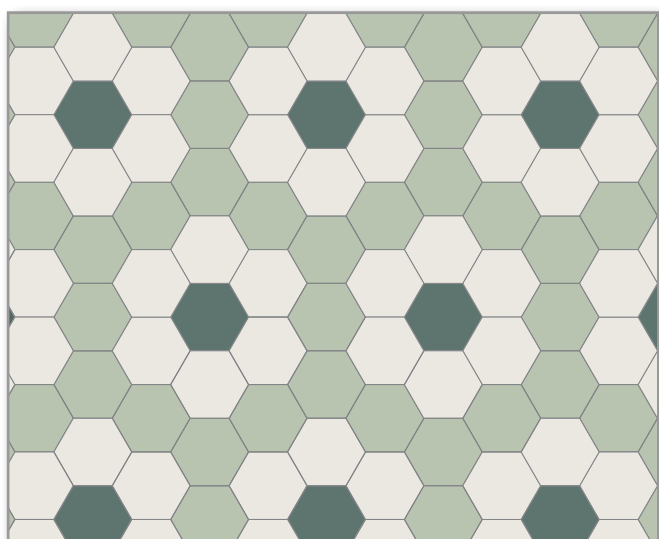
SPECIAL DESIGN

“FLOWER 1”

Composition:

- ◆ Pearl Grey 10cm Hexagons
- ◆ Super White 10cm Hexagons
- ◆ Blue 10cm Hexagons
- ◆ Black 10cm Hexagons

Loose tiles



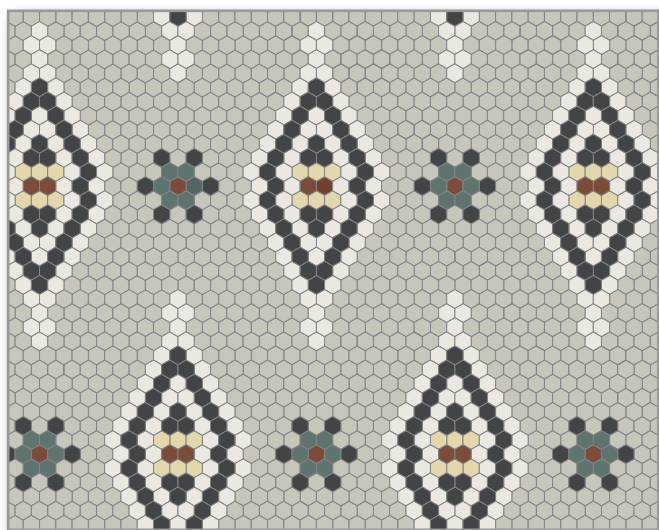
SPECIAL DESIGN

“FLOWER 2”

Composition:

- ◆ Pistachio 10cm Hexagons
- ◆ Super White 10cm Hexagons
- ◆ Dark Green 10cm Hexagons

Loose or assembled on sheets



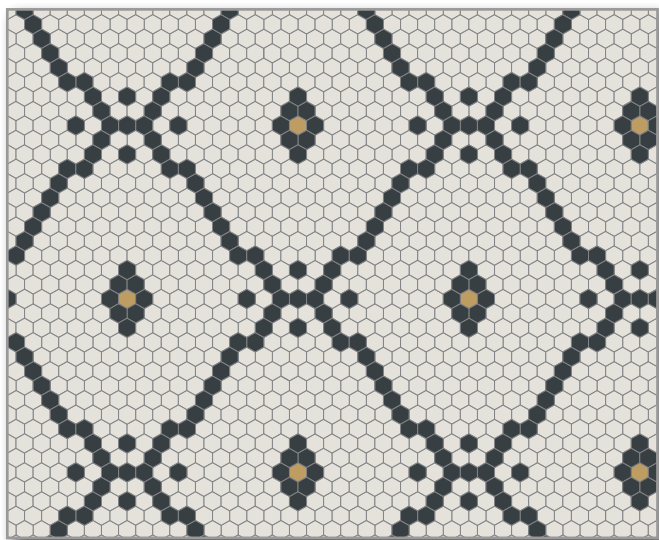
SPECIAL DESIGN

“SNOWFLAKE”

Composition:

- ◆ Pearl Grey 2.5cm Hexagons
- ◆ Red 2.5cm Hexagons
- ◆ Dark Green 2.5cm Hexagons
- ◆ Black 2.5cm Hexagons
- ◆ Super White 2.5cm Hexagons
- ◆ Vanilla 2.5cm Hexagons

Assembled on sheets



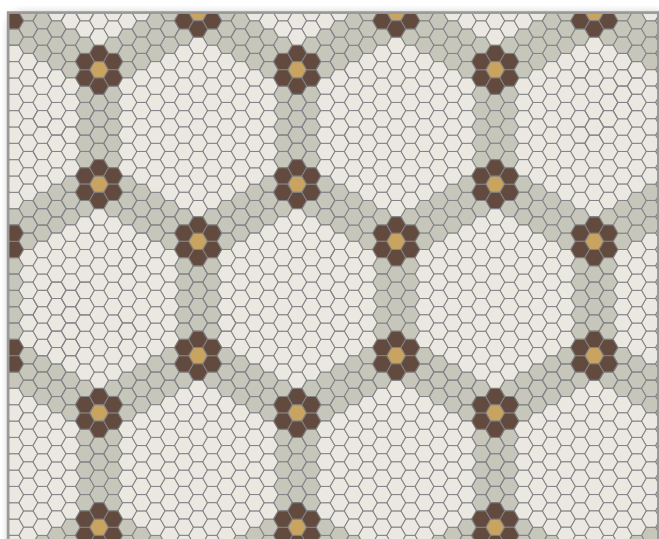
SPECIAL DESIGN

“DIAMOND”

Composition:

- ◆ Black 2.5cm Hexagons
- ◆ Super White 2.5cm Hexagons
- ◆ Yellow 2.5cm Hexagons

Assembled on sheets



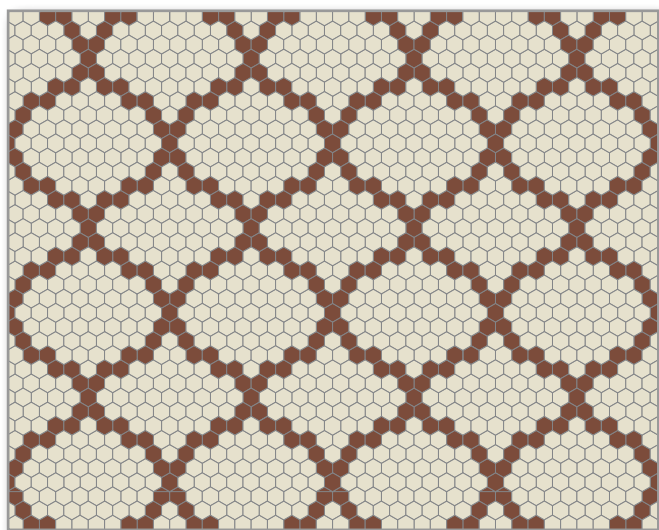
SPECIAL DESIGN

“NET”

Composition:

- ◆ Pearl Grey 2.5cm Hexagons
- ◆ Chocolate 2.5cm Hexagons
- ◆ Yellow 2.5cm Hexagons
- ◆ Super White 2.5cm Hexagons

Assembled on sheets



SPECIAL DESIGN

“LANTERN”

Composition:

- ◆ White 2.5cm Hexagons
- ◆ Red 2.5cm Hexagons

Assembled on sheets





Octagons and Dots

10cm / 15cm

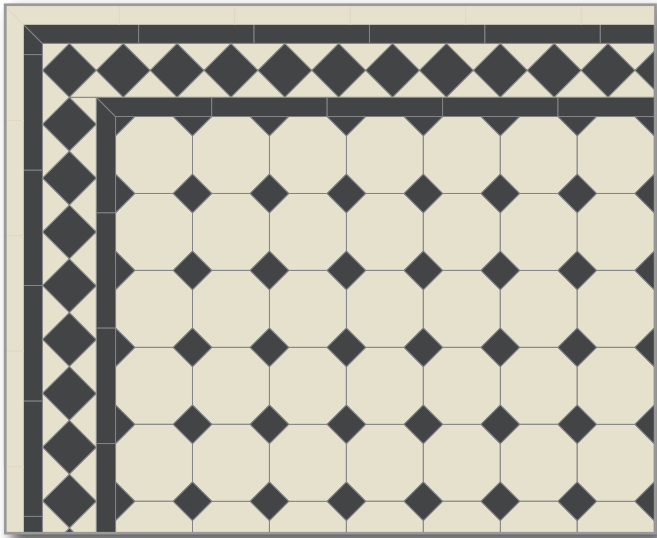


❖ Available sizes

- ◆ 10cm Octagons (+ 3.5cm dots)
- ◆ 15cm Octagons (+ 5cm dots)

❖ Number of pieces per M²

- ◆ 100pcs of 10cm Octagons + 100pcs of 3.5cm Dots
- ◆ 44pcs of 15cm Octagons + 44pcs of 5cm Dots



CLASSIC BICOLOR PATTERN

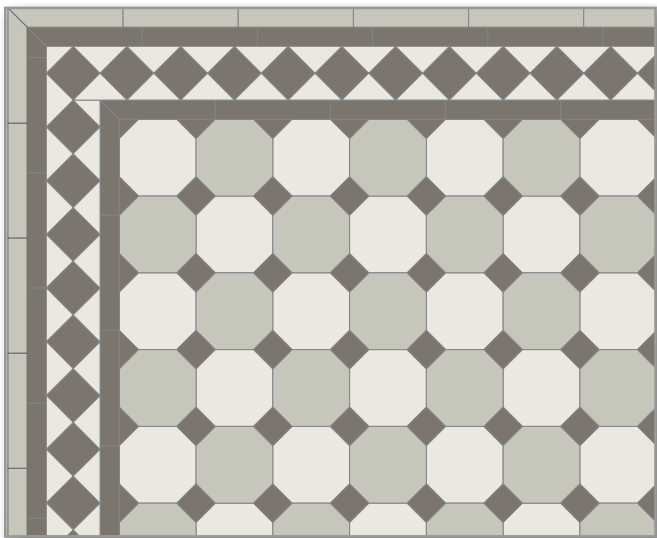
Composition/M2:

- ◆ White 10cm Octagons
- ◆ Black 3.5cm Dots

Border reference:

- ◆ Glasgow (simple version)

Loose tiles (except for the border) or assembled on sheets of 30.7x30.7cm



OCTAGONS CHECKER PATTERN

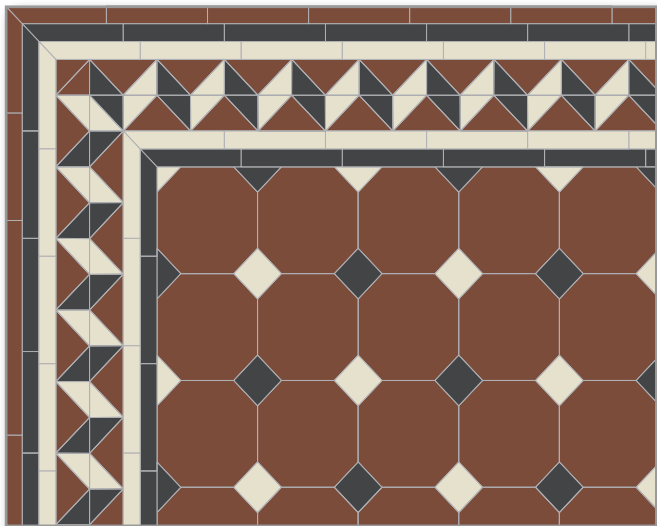
Composition:

- ◆ Pearl Grey 10cm Octagons
- ◆ Super White 10cm Octagons
- ◆ Charcoal 3.5cm Dots

Border reference:

- ◆ Glasgow (simple version)

Loose tiles (except for the border) or assembled on sheets of 30.7x30.7cm



MULTICOLOURED DOTS

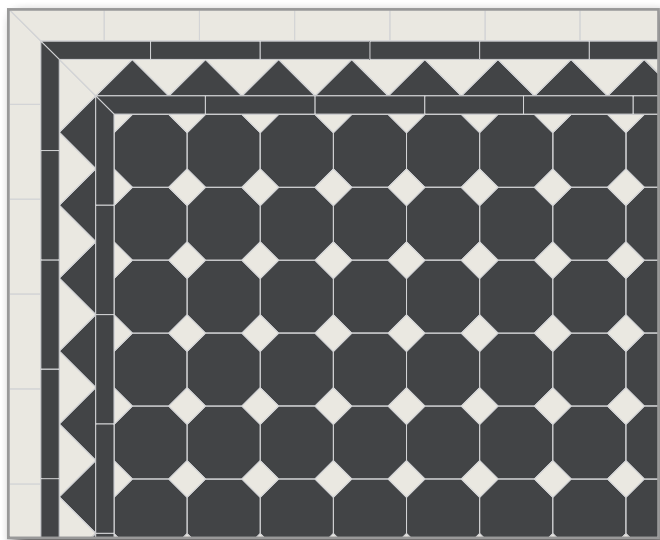
Composition:

- ◆ Red 15cm Octagons
- ◆ White 5cm Dots
- ◆ Black 5cm Dots

Border reference:

- ◆ Tottenham

Loose tiles (except for the border)



CLASSIC BICOLOR PATTERN

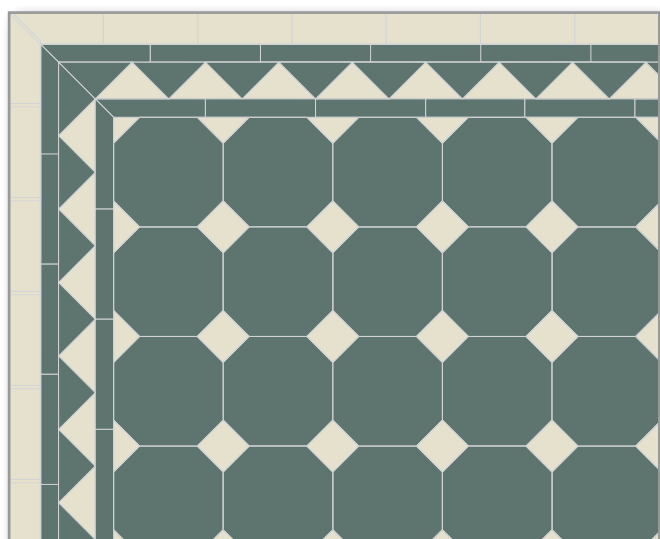
Composition:

- ◆ Black 10cm Octagons
- ◆ Super White 3.5cm Dots

Border reference:

- ◆ Chelsea

Loose tiles (except for the border) or assembled on sheets of 30.7x30.7cm



CLASSIC BICOLOR PATTERN

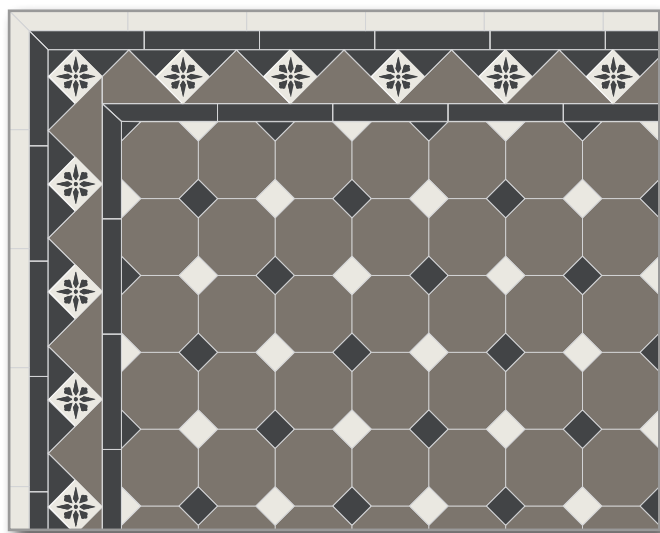
Composition:

- ◆ Dark Green 15cm Octagons
- ◆ White 5cm Dots

Border reference:

- ◆ Chelsea

Loose tiles (except for the border)



BICOLOUR DOTS

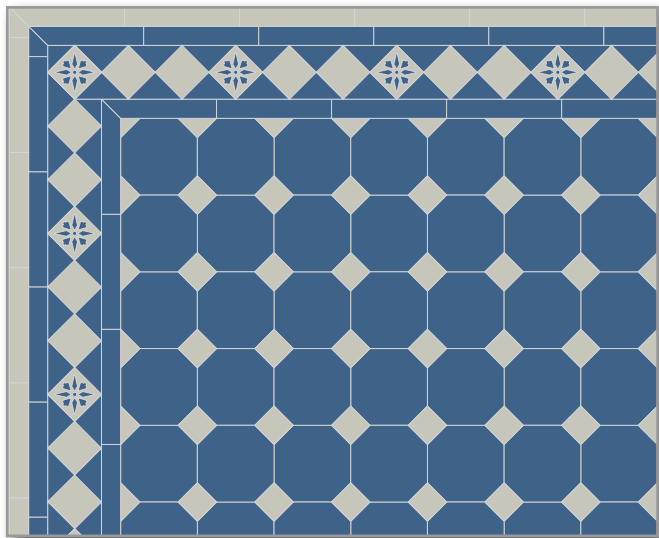
Composition:

- ◆ Charcoal 10cm Octagons
- ◆ Super White 3.5cm Dots
- ◆ Black 3.5cm Dots

Border reference:

- ◆ Nottingham

Loose tiles (except for the border) or assembled on sheets of 30.7x30.7cm



CLASSIC BICOLOR PATTERN

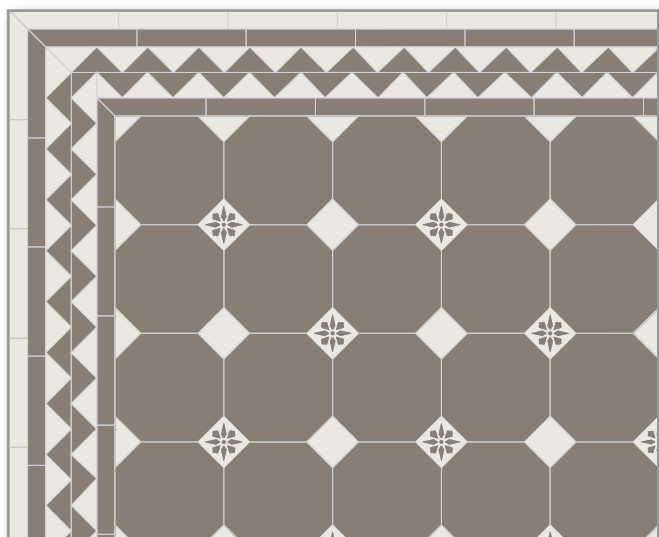
Composition:

- ◆ Blue Moon 10cm Octagons
- ◆ Pearl Grey 3.5cm Dots

Border reference:

- ◆ Glasgow

Loose tiles (except for the border) or assembled on sheets of 30.7x30.7cm



PLAIN DOTS AND ENCAUSTIC TILES

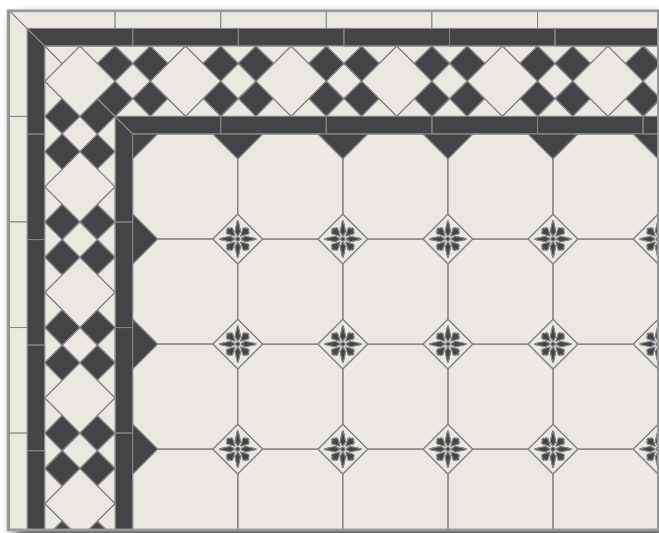
Composition:

- ◆ Grey 15cm Octagons
- ◆ Super White 5cm Dots
- ◆ Grey and Super White 5cm Encaustic tiles

Border reference:

- ◆ Brighton

Loose tiles (except for the border)



ENCAUSTIC TILES AS DOTS

Composition:

- ◆ Super White 15cm Octagons
- ◆ Black and Super White 5cm Encaustic tiles

Border reference:

- ◆ Newcastle (simple version)

Loose tiles (except for the border)





Triangles

3.5x3.5x5 / 5x5x7 / 7x7x10 / 10x10x14 / 8.8x8.8x14.6cm

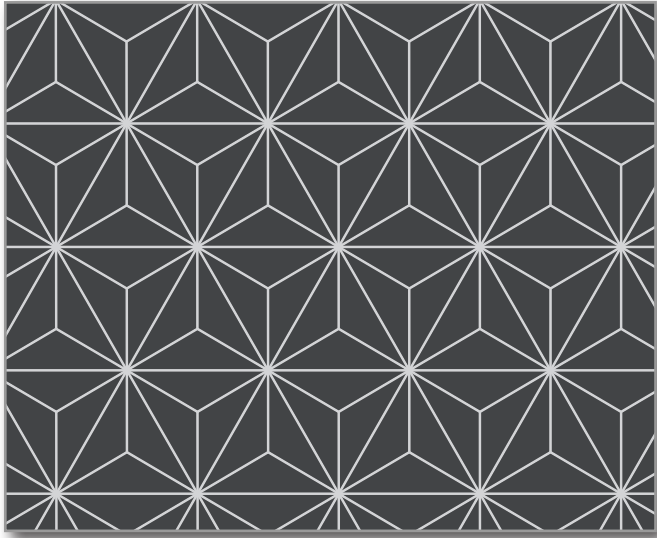


❖ Right-angled Triangles

- ◆ 3,5x3,5x5cm
- ◆ 5x5x7cm
- ◆ 7x7x10cm
- ◆ 10x10x14cm

❖ Isosceles Triangles

- ◆ 8.5x8.5x14.6cm

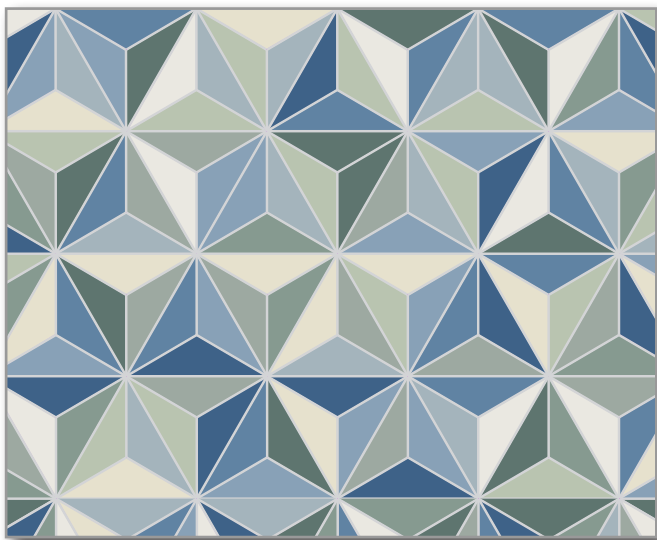


PLAIN COLOUR

Composition:

- ◆ Black Isosceles Triangles

Assembled on sheets of 0.063m²

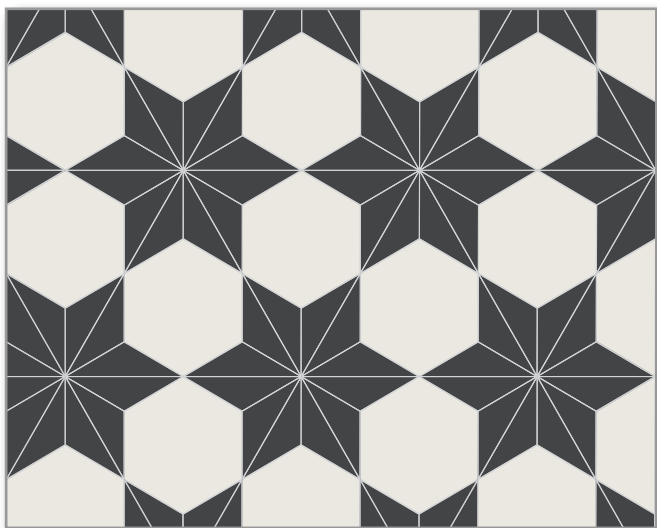


RANDOM MIX

Composition (10% of each colour):

- ◆ Super White
- ◆ White
- ◆ Pale Green
- ◆ Green
- ◆ Dark Green
- ◆ Pistachio
- ◆ Pale Blue
- ◆ Blue
- ◆ Dark Blue
- ◆ Blue Moon

Assembled on sheets of 0.063m²



TRIANGLES AND HEXAGONS

Composition:

- ◆ Black Isosceles Triangles
- ◆ Super White 15cm Hexagons

15cm Hexagons are provided loose and isosceles triangles are provided on sheets

Rounds

Diameters: 1.8/3.2/5.9cm

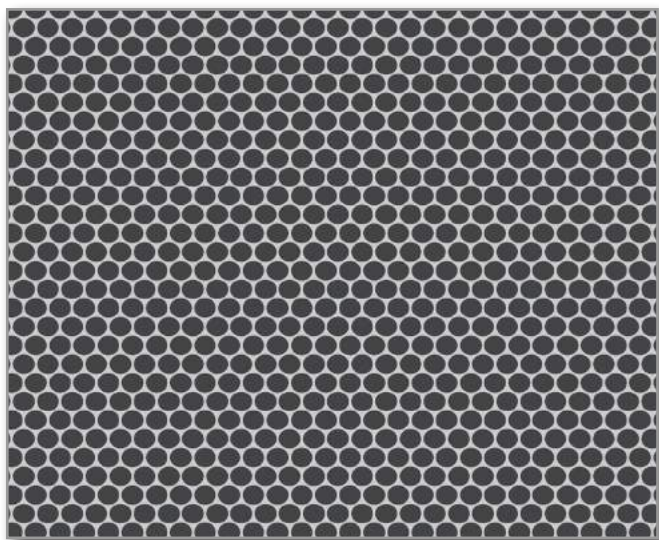


❖ Available size (diameter)

- ◆ 1.8cm

❖ Available thicknesses

- ◆ 3.8mm
- ◆ 9mm

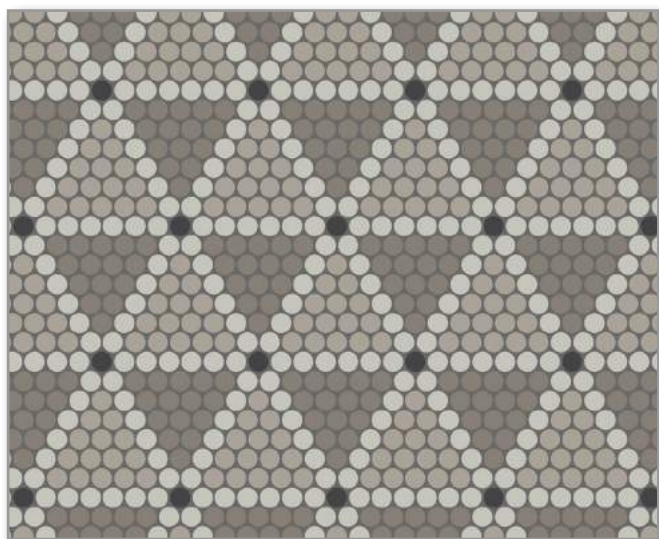


PLAIN COLOUR

Composition:

- ◆ Black 1.8cm Rounds

Assembled on sheets of 30x28cm

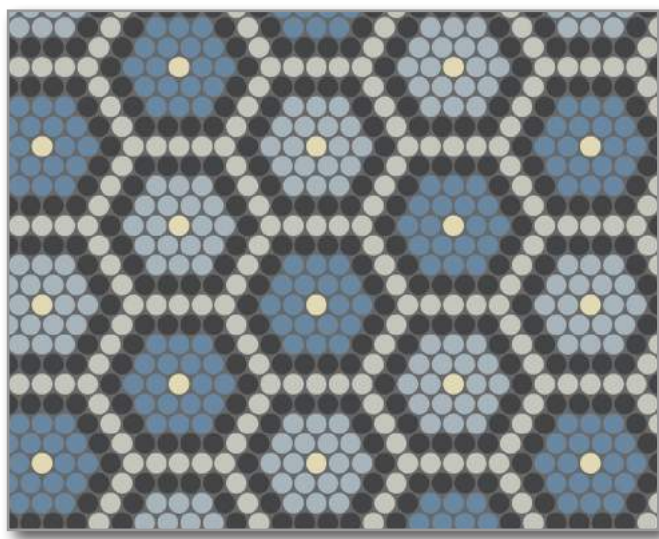


DESIGN

Composition:

- ◆ 33% Linen 1.8cm Rounds
- ◆ 33% Mole 1.8cm Rounds
- ◆ 33% Coffee 1.8cm Rounds

Assembled on sheets



DESIGN

Composition:

- ◆ Dark Blue 1.8cm Rounds
- ◆ Vanilla 1.8cm Rounds
- ◆ Pale Blue 1.8cm Rounds
- ◆ Black 1.8cm Rounds
- ◆ Pearl Grey 1.8cm Rounds

Assembled on sheets

Diamonds

5cm

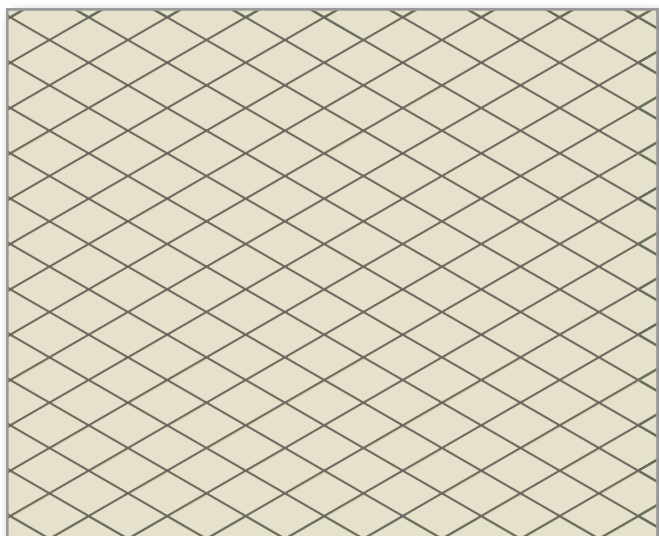


❖ Available sizes (length)

◆ 5cm

❖ Available thickness

◆ 5mm

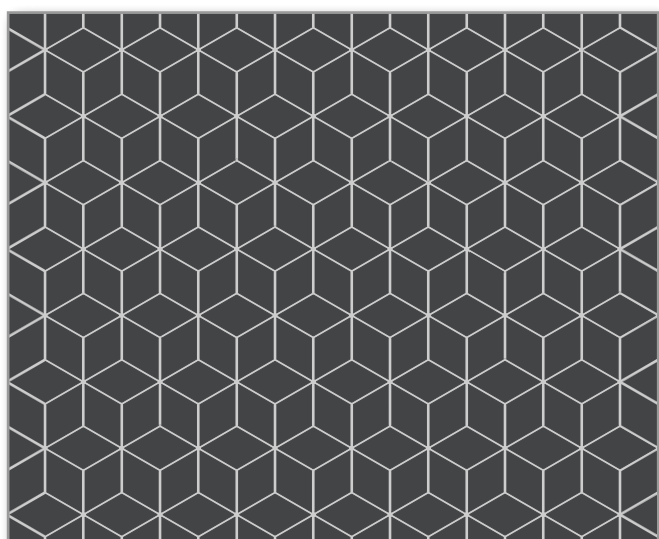


STRAIGHT PLAIN COLOUR PATTERN

Composition:

- ◆ White Diamonds

Assembled on sheets

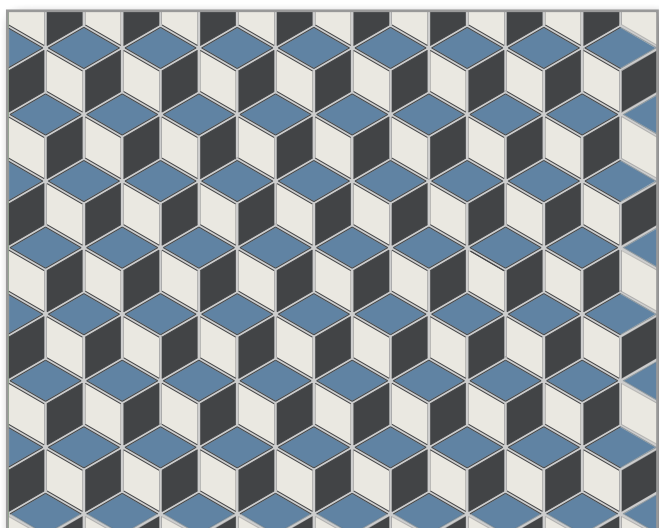


ALTERNATE PLAIN COLOUR PATTERN

Composition:

- ◆ Black Diamonds

Assembled on sheets



DESIGN

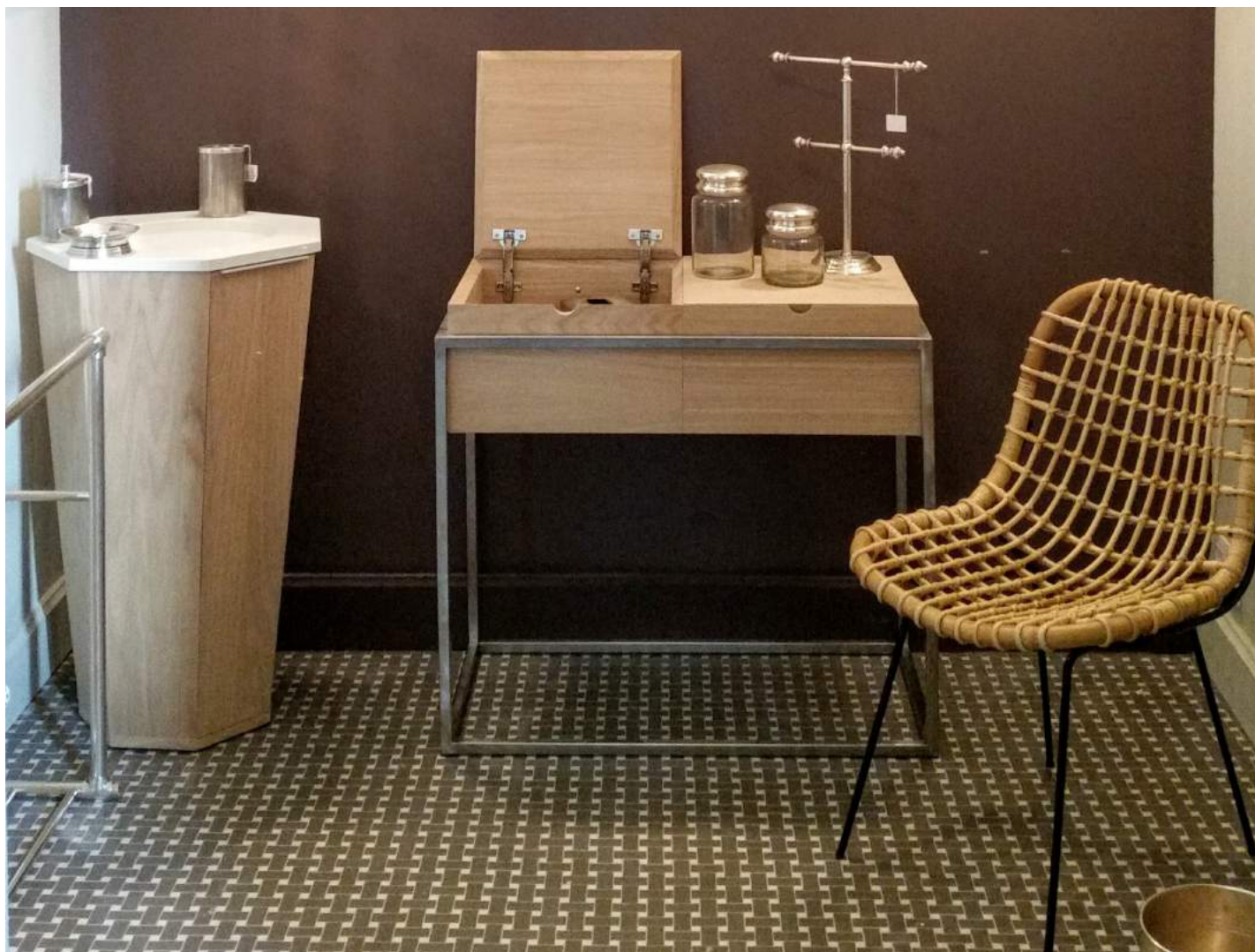
“TROMPE L’OEIL”

Composition:

- ◆ Black Diamonds
- ◆ Super White Diamonds
- ◆ Dark Blue Diamonds

Assembled on sheets

Mosaic Combinations

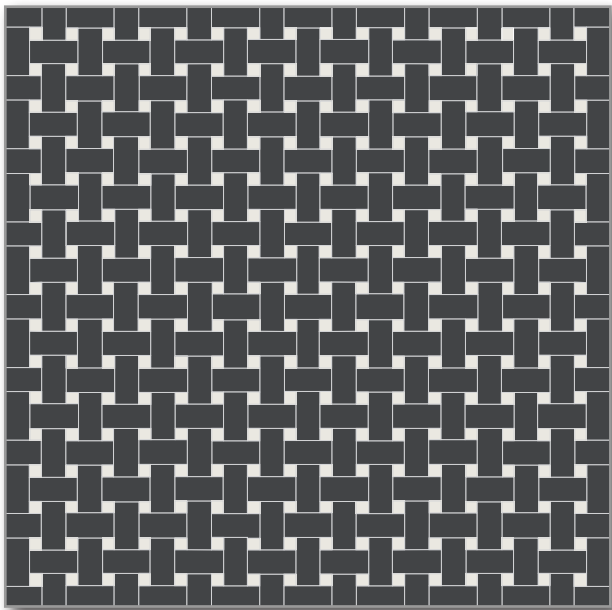


❖ Assembly packaging

All assemblies shown below are supplied assembled on sheets for easy installation.

❖ Colours

Each part of the compositions shown can be customised with your choice of colours. Please contact us for customised layouts matching your ideas.



BASKET WEAVE

Composition:

- ◆ Black 2.35x5cm
- ◆ Super White 1.2x1.2cm

Assembled on sheets of 31.4x31.4cm

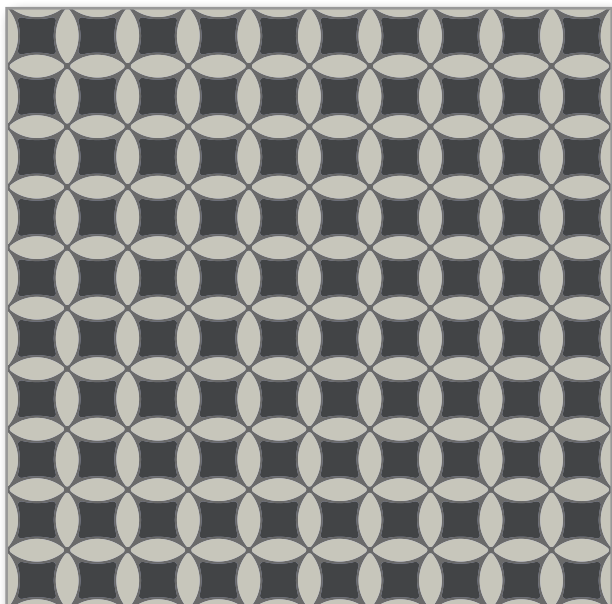


HONEYCOMB

Composition:

- ◆ Black 3.2cm Crosses
- ◆ Vanilla 1.8cm Rounds

Assembled on sheets of 28.9x28.9cm



ECLIPSE

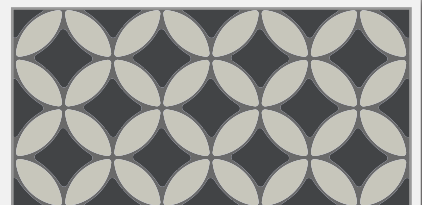
Composition:

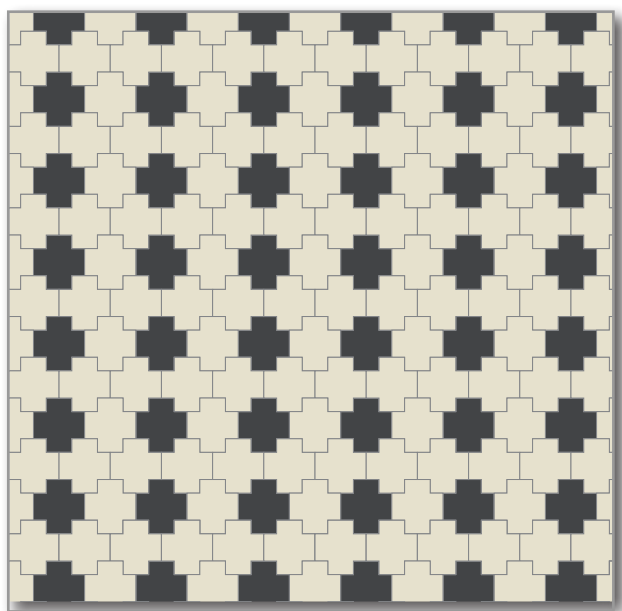
- ◆ Black 3.7cm Stars
- ◆ Pearl Grey 5.2cm Ellipses

Assembled on sheets of 29.7x29.7cm

45° angle installation

Use an angle of 45° when installing this pattern for an alternative look (cutting required).



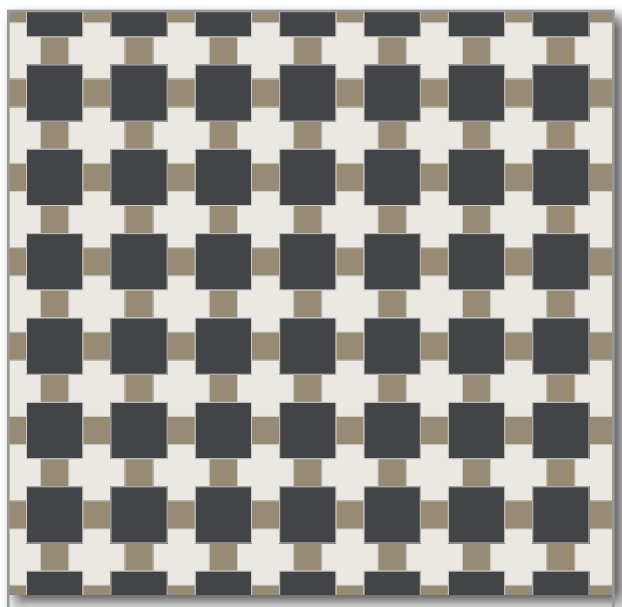


TETRIX

Composition:

- ◆ White 7cm Crosses
- ◆ Black 7cm Crosses

Assembled on sheets of 27.1x25.3cm



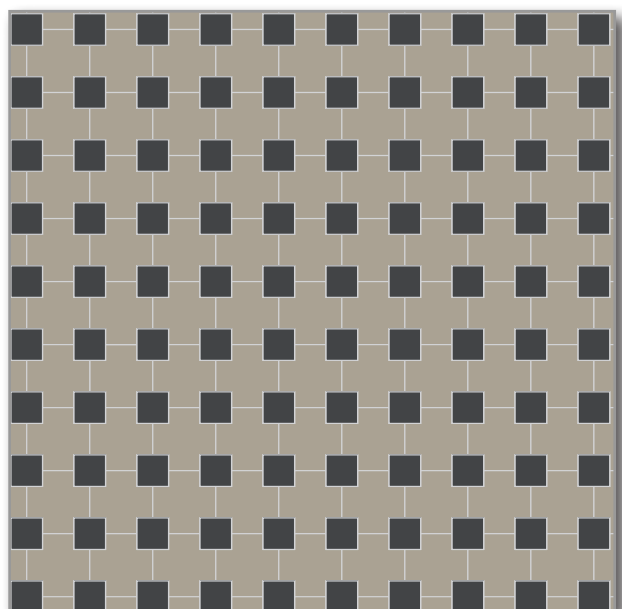
TEXTILE

Composition:

- ◆ Super White 7cm Crosses
- ◆ Mole 3.5cm Dots
- ◆ Black 7x7cm

Assembled on sheets of 32.7x32.7cm

Photograph on opposite page (different colours).

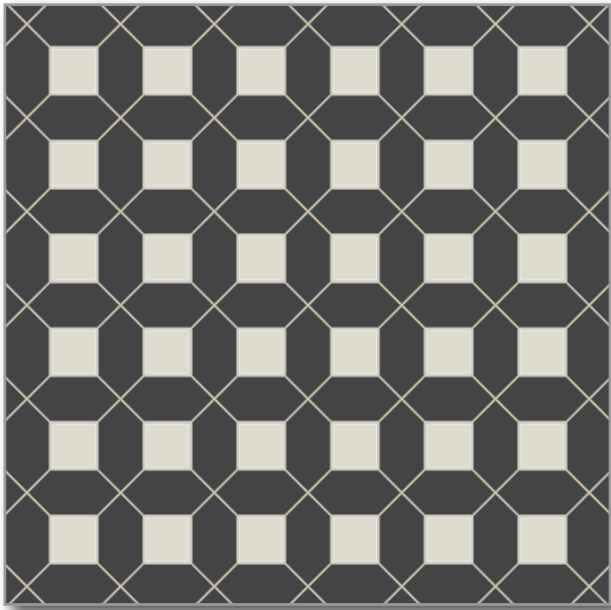


REEF KNOT

Composition:

- ◆ Pale Grey 7cm Crosses
- ◆ Black 3.5cm Dots

Assembled on sheets of 28.7x27cm

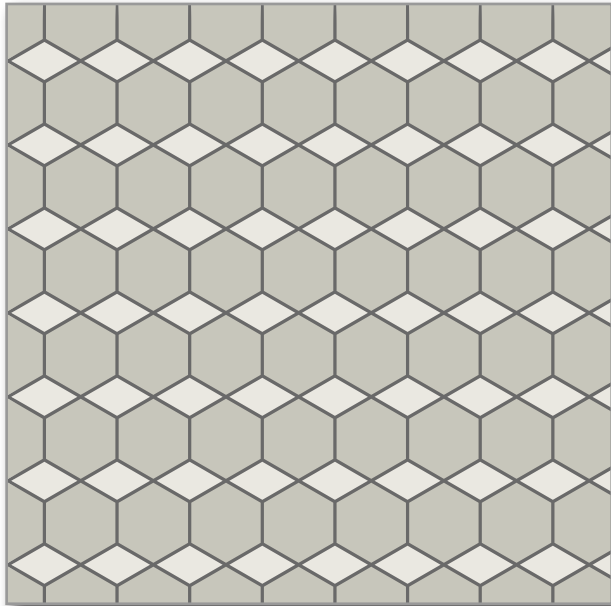


CHURCH

Composition:

- ◆ Black Shuttles
- ◆ Super White 7x7cm

Assembled on sheets of 30,3x30,3cm



HEXAGONS+DIAMONDS PATTERN

Composition:

- ◆ Super White 5cm Hexagons
- ◆ White Diamonds

Assembled on sheets



^ Above: Textile pattern

Designs and Borders

Victorian Range



❖ Packaging

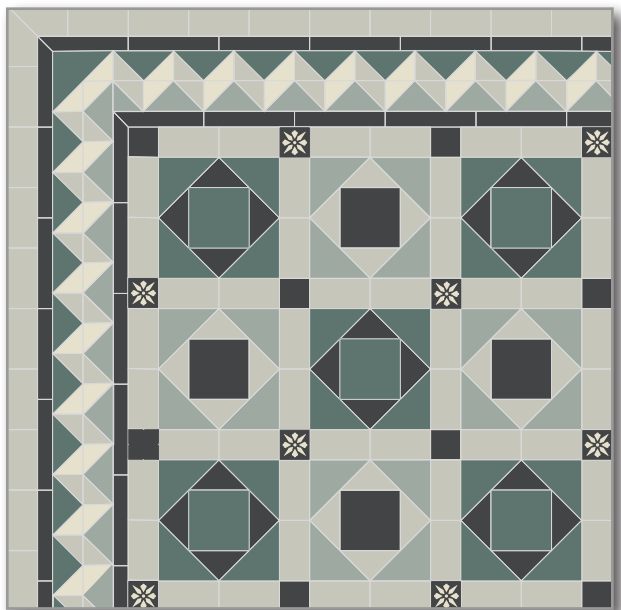
All our floor designs and borders are supplied pre-assembled on sheets of about 30x30 cm for easy installation. Caution, floor designs and borders are supplied separately so any border can be used with your choice of floor design.

❖ Joints

Floor designs and borders assembled edge to edge and supplied without joint. Some floor designs have an alternative version with standard joints. Please ask us for any information.

❖ Models

Some borders are presented with plain squares around them which are used here for aesthetic purposes only.



ANNANDALE

Annandale design and border

Colours:

- ◆ Pearl Grey
- ◆ Black
- ◆ Dark Green
- ◆ Pale Green
- ◆ White

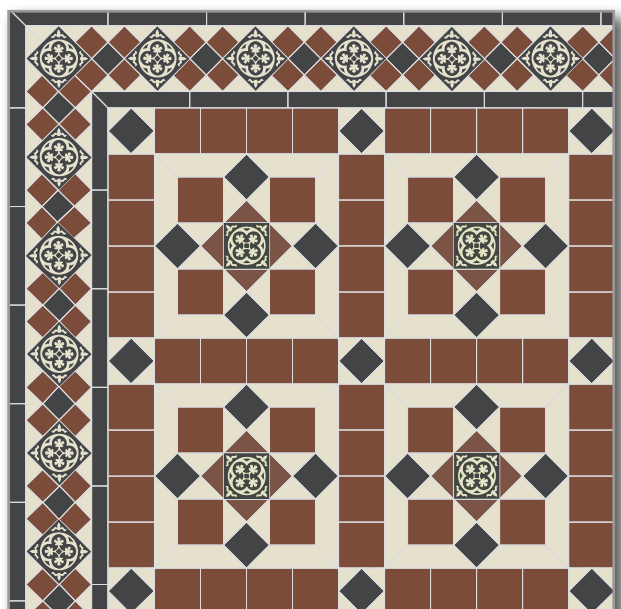


BRIGHTON

Brighton design and border

Colours:

- ◆ Black
- ◆ White
- ◆ Red
- ◆ Linen

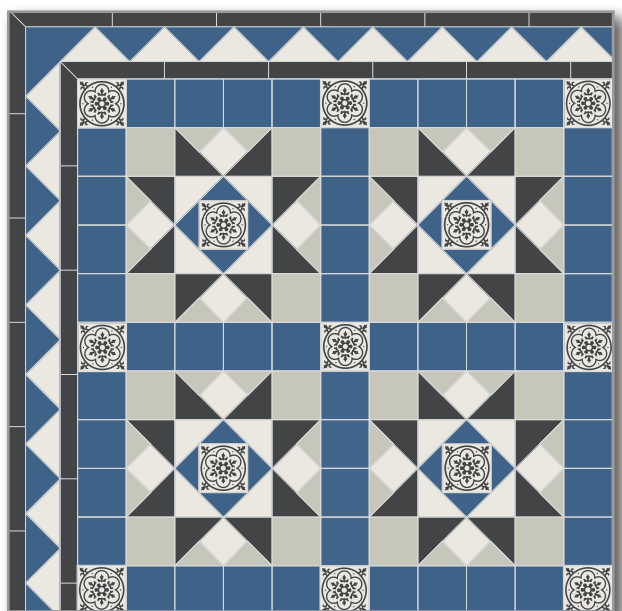


BRISTOL

Bristol design and border

Colours:

- ◆ Black
- ◆ Red
- ◆ White

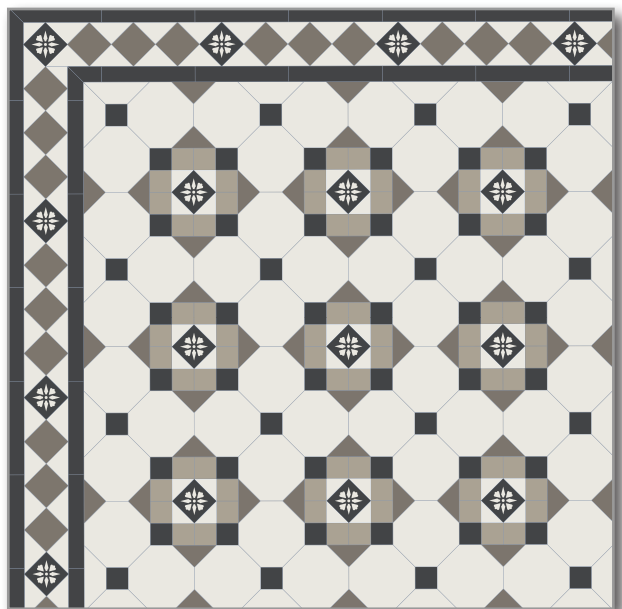


CHELSEA

Chelsea design and border

Colours:

- ◆ Blue Moon
- ◆ Black
- ◆ Super White
- ◆ Pearl Grey

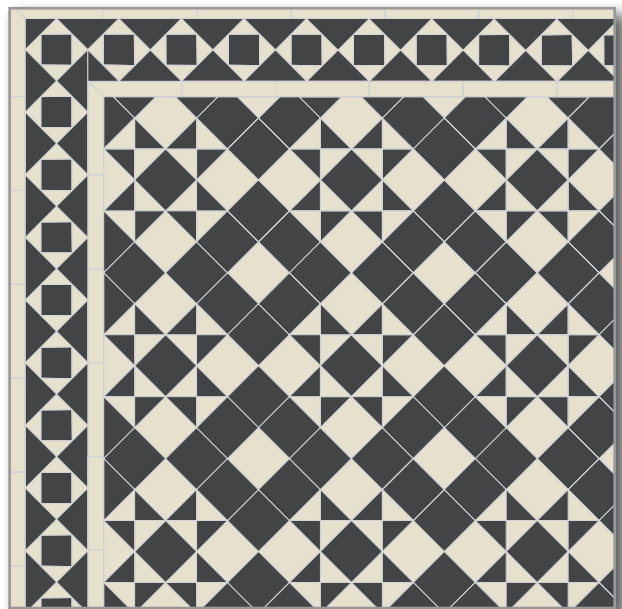


GLASGOW

Glasgow design and border

Colours:

- ◆ Super White
- ◆ Charcoal
- ◆ Black
- ◆ Pale Grey

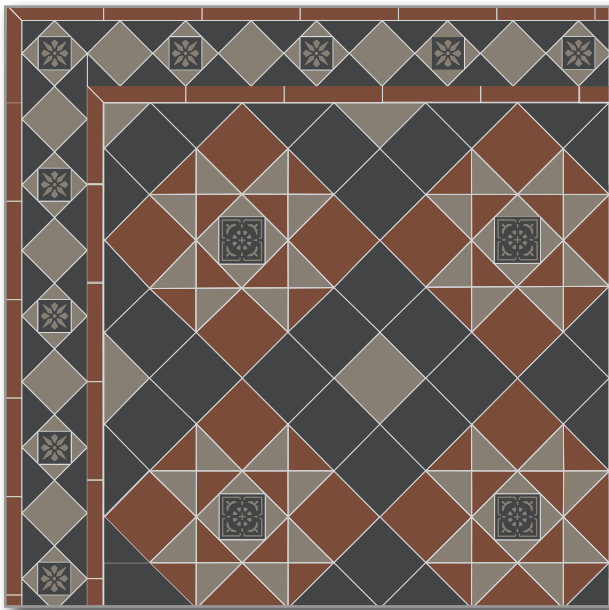


LEEDS

Leeds design and Windsor border

Colours:

- ◆ Black
- ◆ White

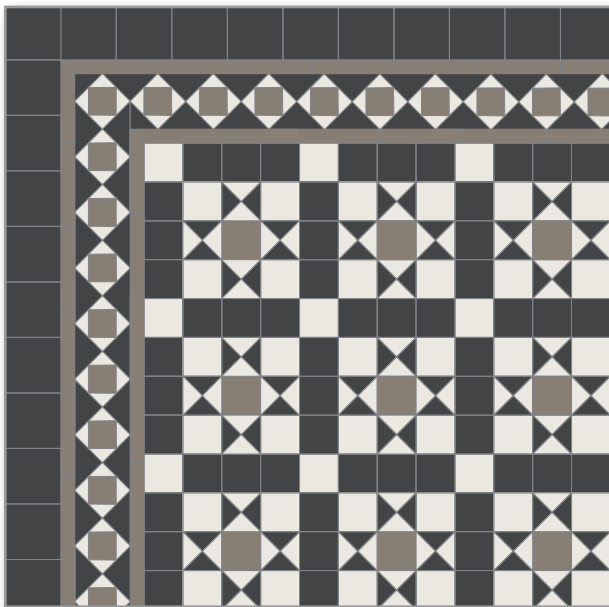


LIVERPOOL

Liverpool design and border

Colours:

- ◆ Black
- ◆ Red
- ◆ Grey



LONDON

London design and Windsor border

Colours:

- ◆ Black
- ◆ Super White
- ◆ Grey

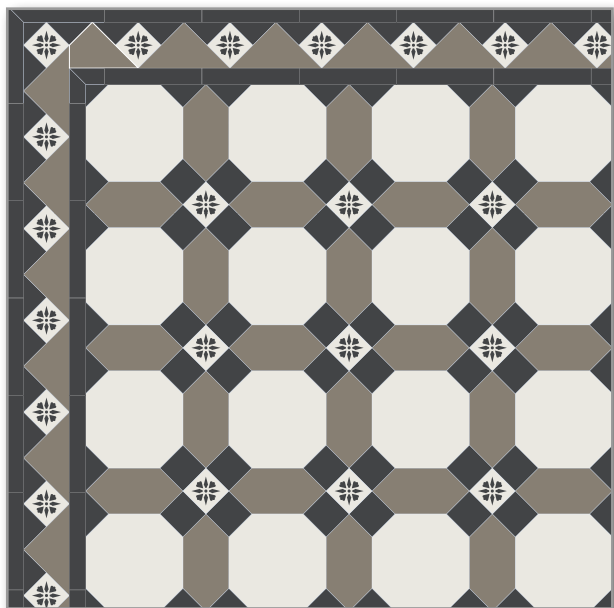


NEWCASTLE

Newcastle design and border

Colours:

- ◆ Dark Green
- ◆ Super White
- ◆ Pearl Grey
- ◆ Black

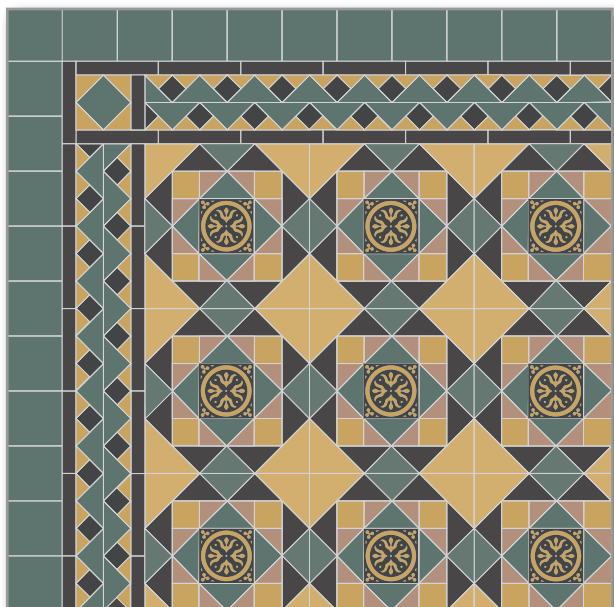


NOTTINGHAM

Nottingham design and border

Colours:

- ◆ Super White
- ◆ Grey
- ◆ Black

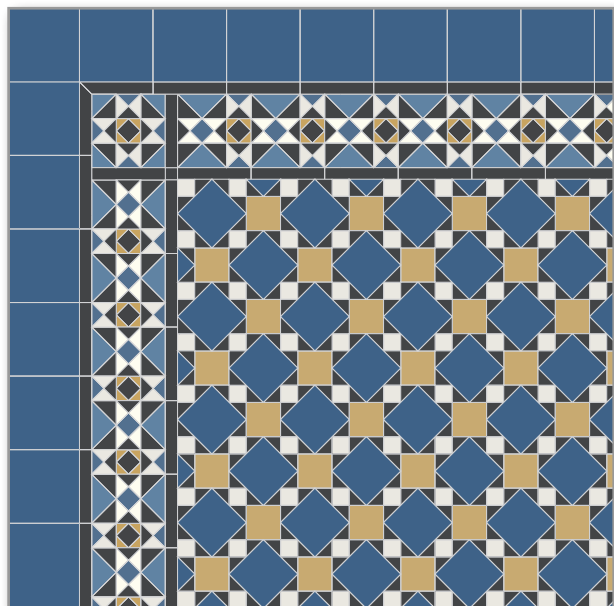


PETERSHAM

Petersham design and border

Colours:

- ◆ Dark Green
- ◆ Black
- ◆ Yellow
- ◆ Old Pink

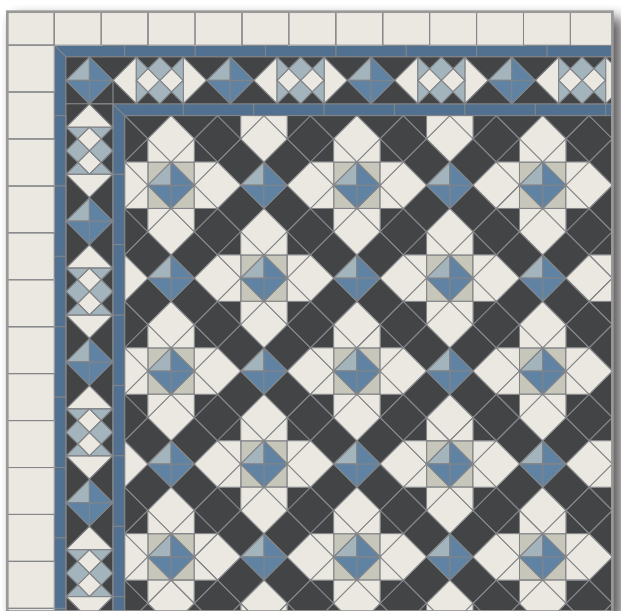


SHEFFIELD

Sheffield design and border

Colours:

- ◆ Blue Moon
- ◆ Dark Blue
- ◆ Black
- ◆ Yellow
- ◆ Super White

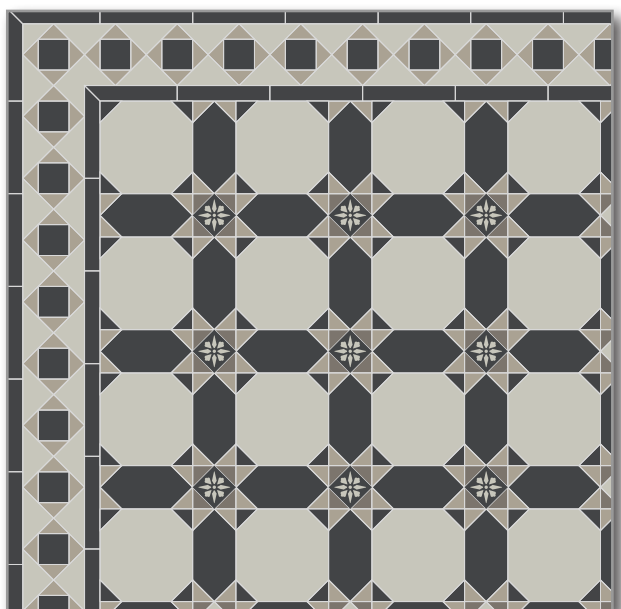


SWANSEA

Swansea design and border

Colours:

- ◆ Black
- ◆ Super White
- ◆ Dark Blue
- ◆ Pale Blue
- ◆ Pearl Grey

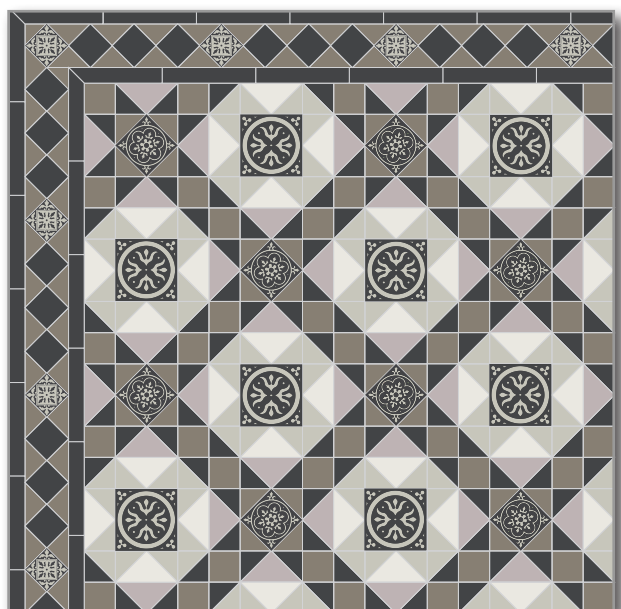


WINDSOR

Windsor design and border

Colours:

- ◆ Pearl Grey
- ◆ Black
- ◆ Charcoal
- ◆ Pale Grey



WOOLLAHRA

Woollahra design and border

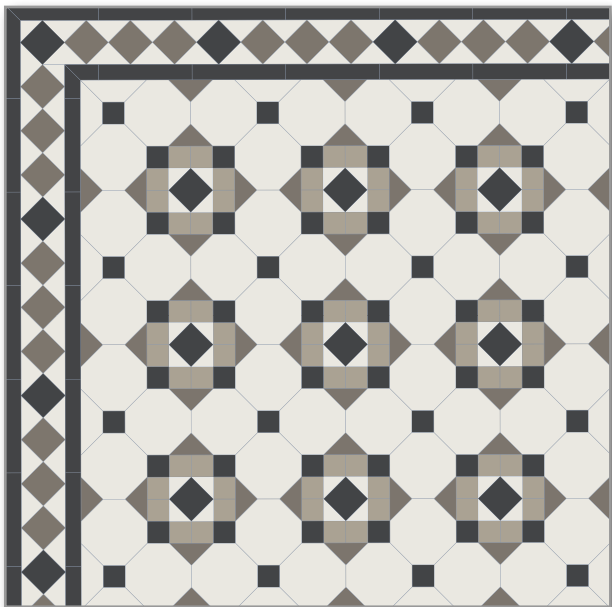
Colours:

- ◆ Super White
- ◆ Pearl Grey
- ◆ Grey
- ◆ Black
- ◆ Parma

Design and Borders

Simplified Victorian Range

The floor designs and borders in our Victorian range are also available as a simple version (without encaustic tiles) for a more streamlined finish as an alternative to the original versions.

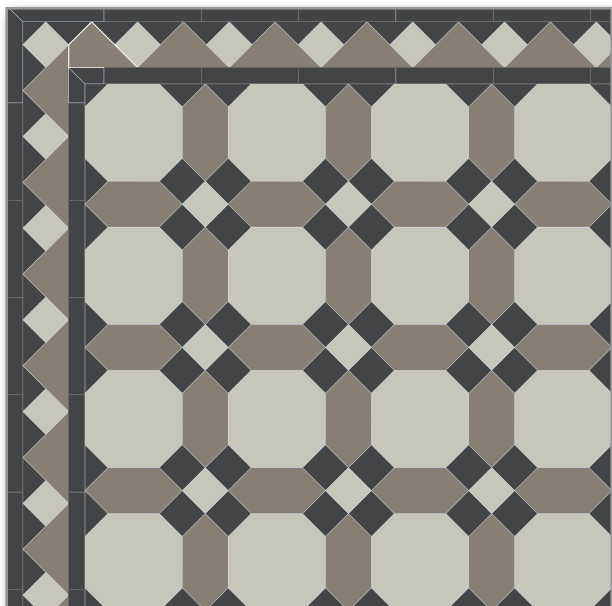


SIMPLE GLASGOW

Simple Glasgow design and border

Colours:

- ◆ Super White
- ◆ Charcoal
- ◆ Black
- ◆ Pale Grey

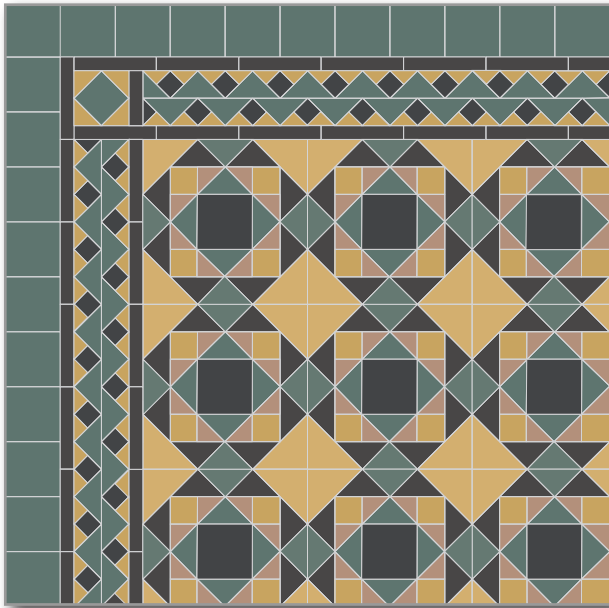


SIMPLE NOTTINGHAM

Simple Nottingham design and border

Colours:

- ◆ Pearl Grey
- ◆ Grey
- ◆ Black

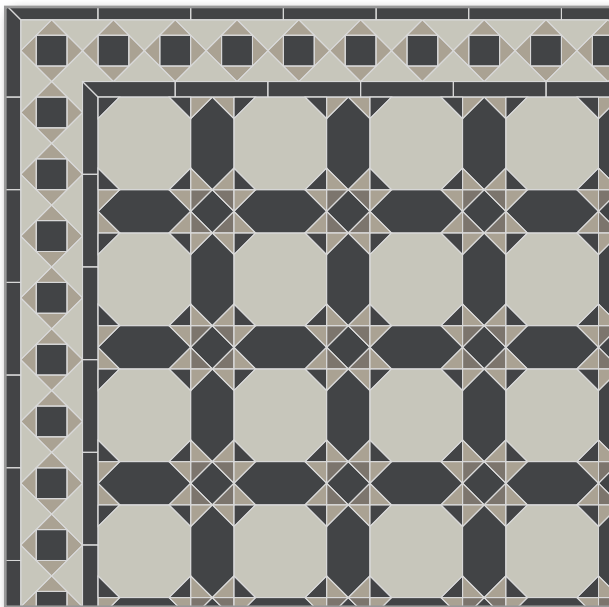


SIMPLE PETERSHAM

Simple Petersham design and border

Colours:

- ◆ Dark Green
- ◆ Black
- ◆ Yellow
- ◆ Old Pink

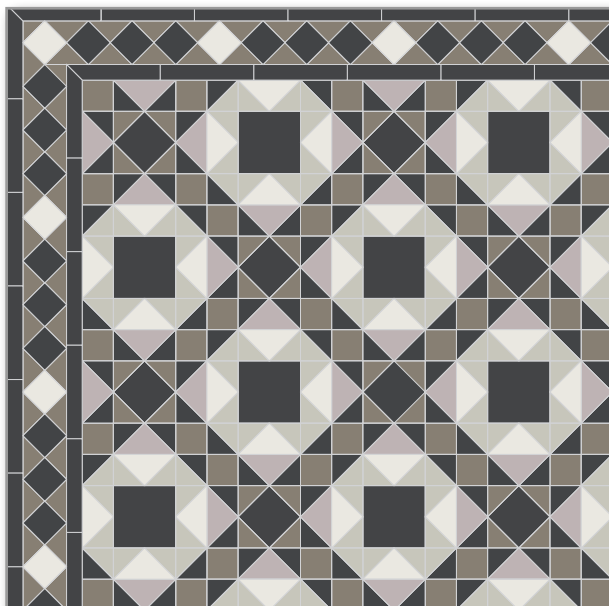


SIMPLE WINDSOR

Simple Windsor design and border

Colours:

- ◆ Pearl Grey
- ◆ Black
- ◆ Charcoal
- ◆ Pale Grey



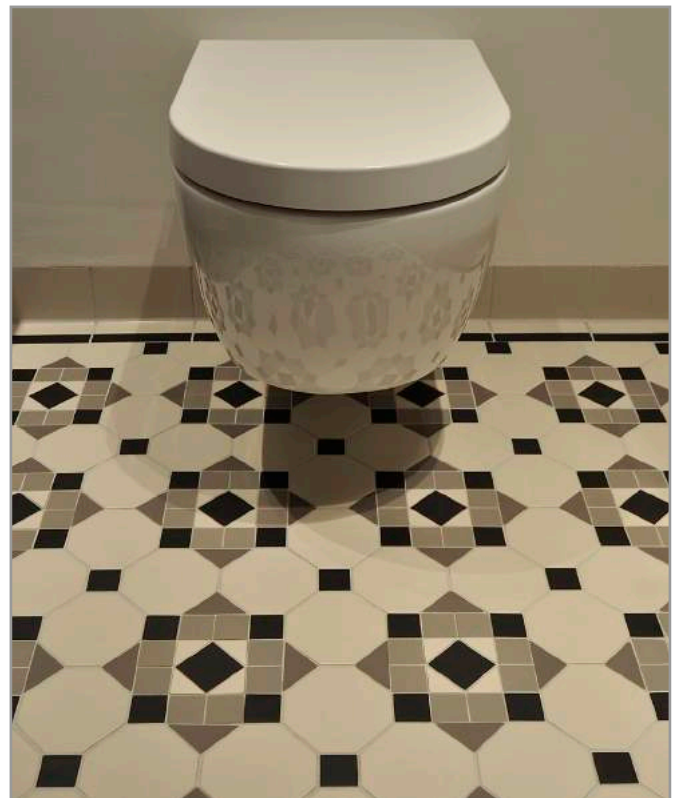
SIMPLE WOOLLAHRA

Simple Woollahra design and border

Colours:

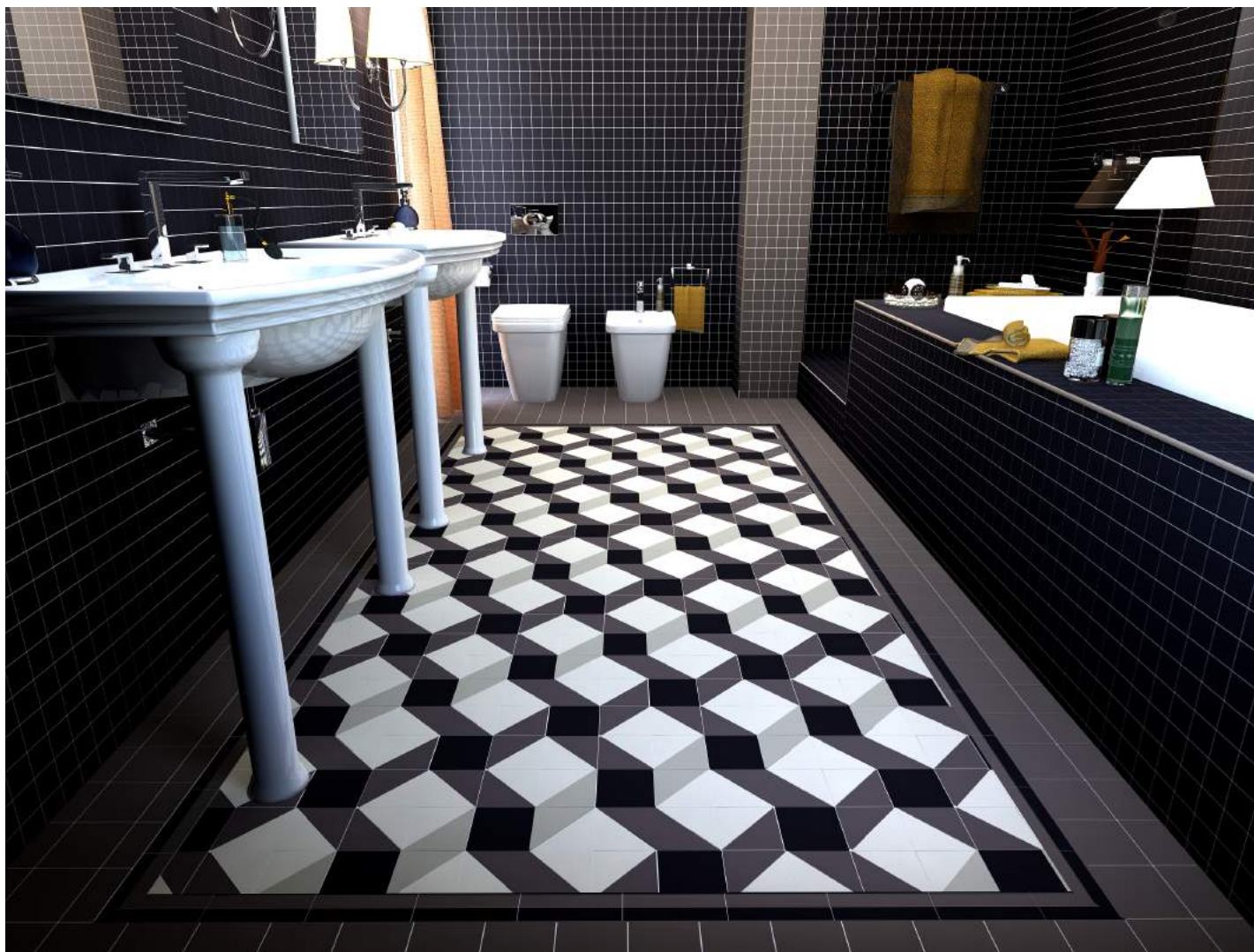
- ◆ Super White
- ◆ Pearl Grey
- ◆ Grey
- ◆ Black
- ◆ Parma





Designs and Borders

Designer Range



❖ Packaging

All our floor designs and borders are supplied pre-assembled on sheets of about 30x30 cm for easy installation. Caution, floor designs and borders are supplied separately so any border can be used with your choice of floor design.

❖ Joints

Floor designs and borders assembled edge to edge and supplied without joint. Some floor designs have an alternative version with standard joints. Please ask us for any information.

❖ Models

Some borders are presented with plain squares around them which are used here for aesthetic purposes only.

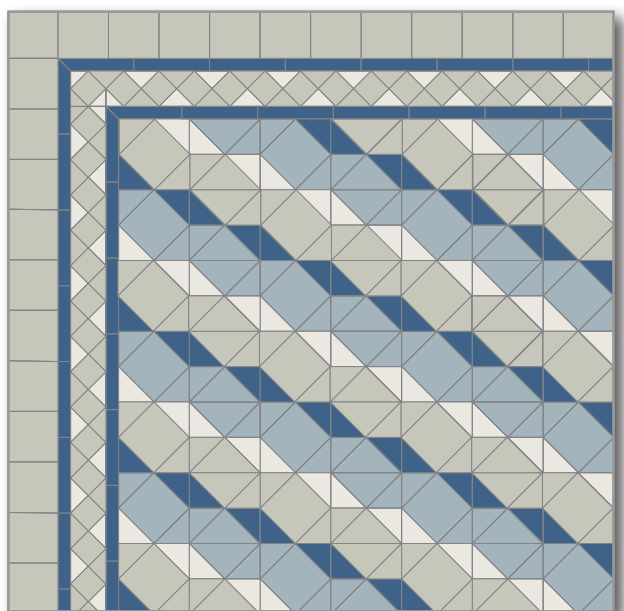


CHICAGO

Chicago design and border

Colours:

- ◆ Black
- ◆ Grey
- ◆ White



DETROIT

Detroit design and border

Colours:

- ◆ Blue Moon
- ◆ Pale Blue
- ◆ Super White
- ◆ Pearl Grey

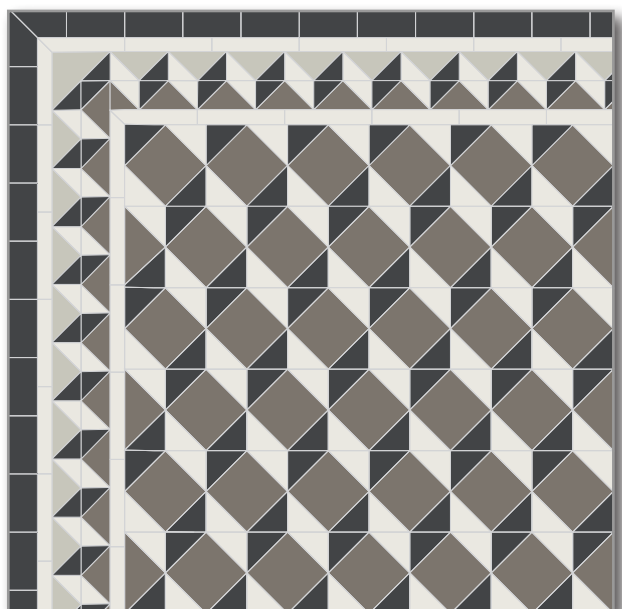


HOUSTON

Houston design and border

Colours:

- ◆ Grey
- ◆ Super White
- ◆ Yellow
- ◆ Black

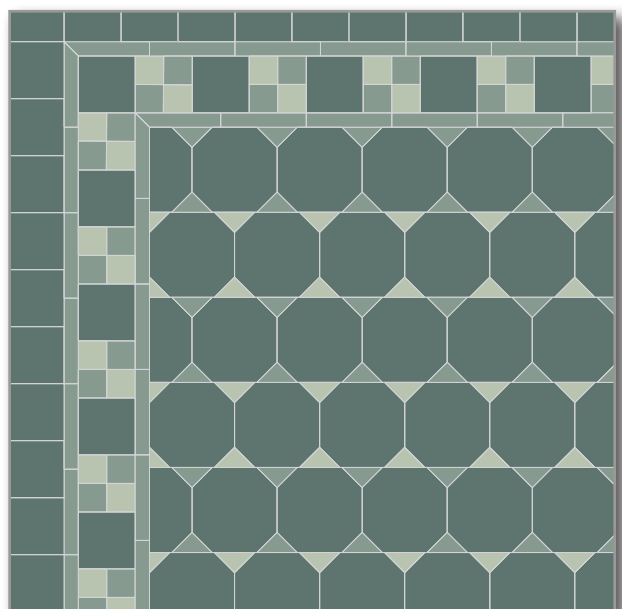


PHILADELPHIA

Philadelphia design and Annandale border:

Colours:

- ◆ Charcoal
- ◆ Super White
- ◆ Black
- ◆ Pearl Grey

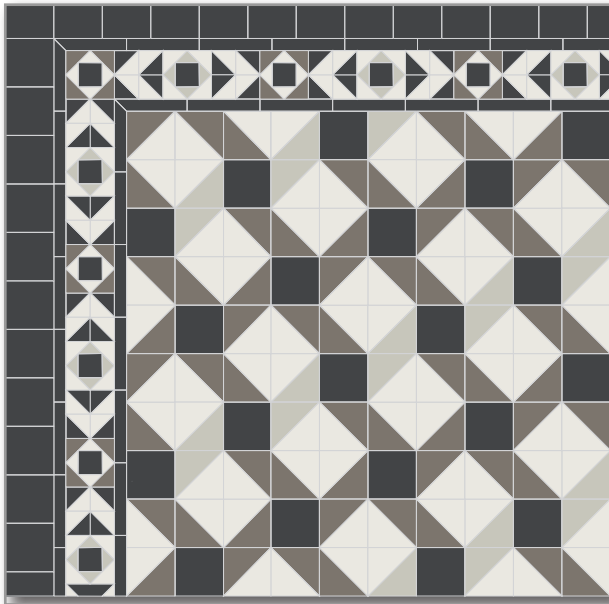


PHOENIX

Phoenix design and border

Colours:

- ◆ Dark Green
- ◆ Pistachio
- ◆ Green

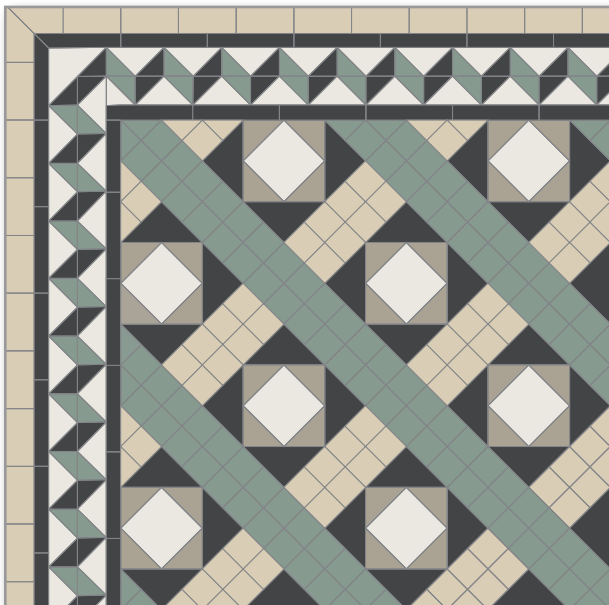


SAN FRANCISCO

San Francisco design and border

Colours:

- ◆ Black
- ◆ Super White
- ◆ Charcoal
- ◆ Pearl Grey

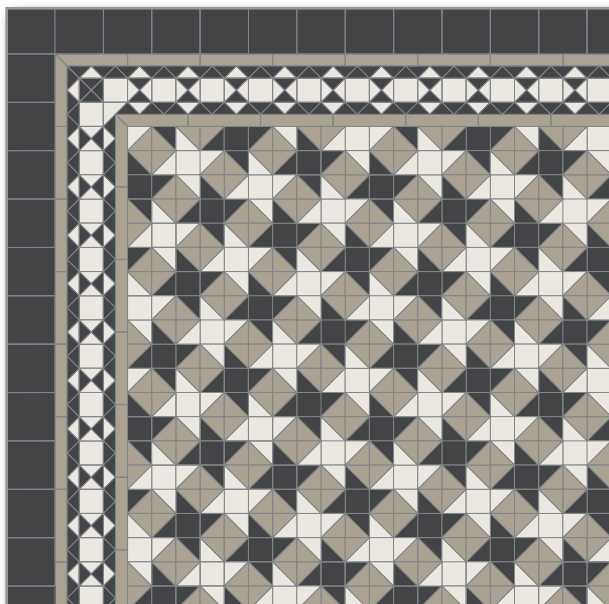


SEATTLE

Seattle design and Tottenham border

Colours:

- ◆ Pale Grey
- ◆ Super White
- ◆ Black
- ◆ Green
- ◆ Ontario



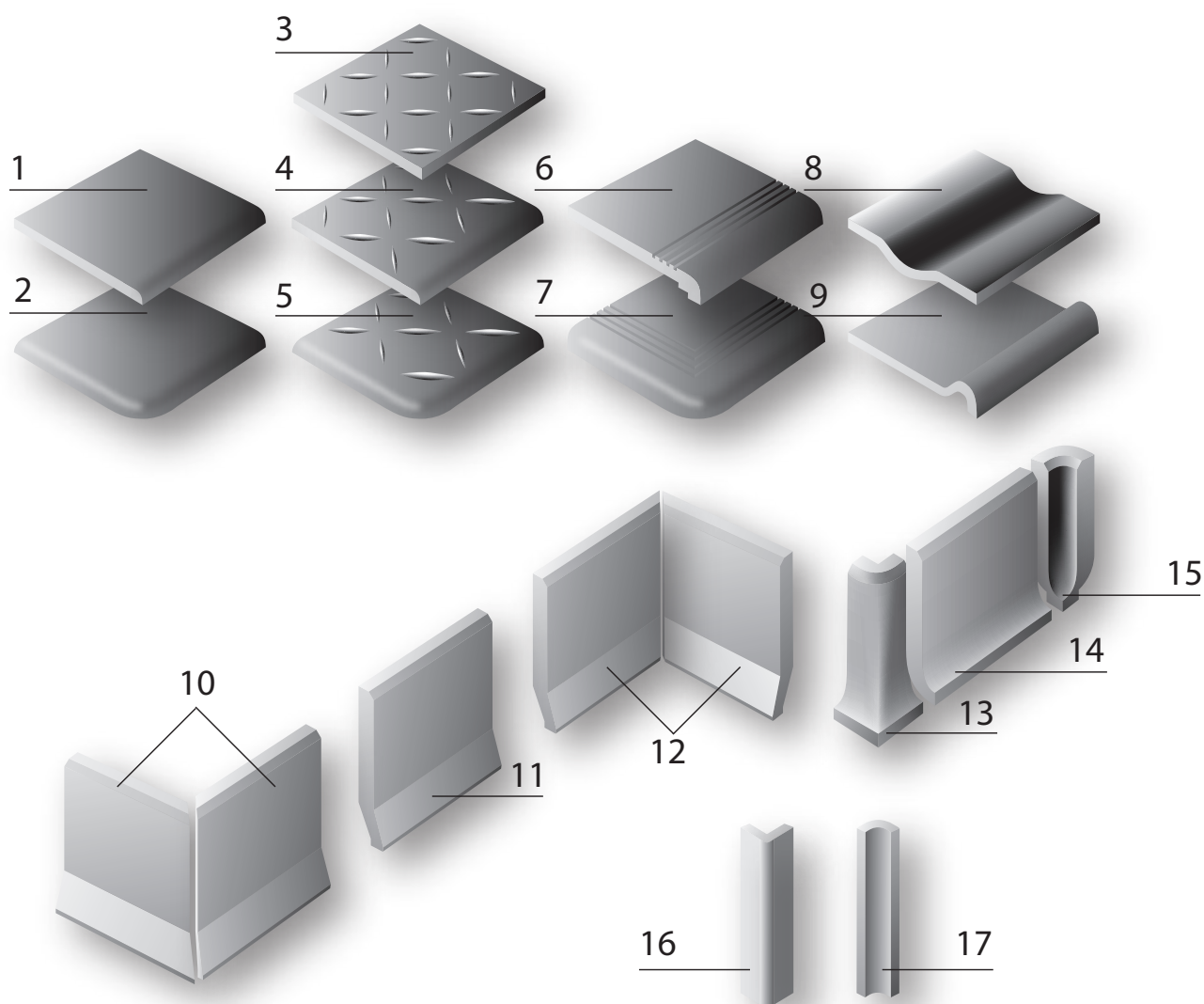
WASHINGTON

Washington design and border

Colours:

- ◆ Black
- ◆ Pale Grey
- ◆ Super White

Accessories and Antislip Tiles

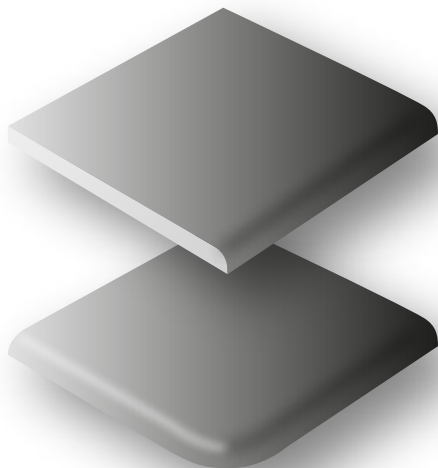


❖ Available colours

All our accessories are available in our standard colours.

❖ Specific accessories

Do not hesitate to contact us for any other specific accessory.



5X5/10X10CM WITH ROUND EDGE

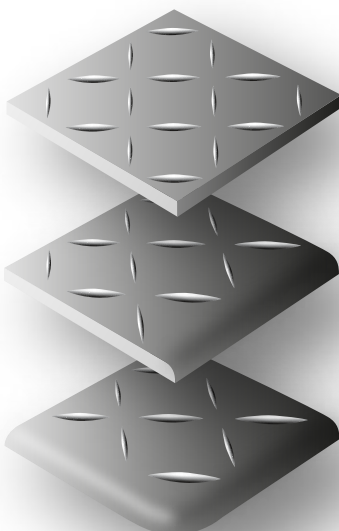
1-2

Round edge versions of our 5x5cm and 10x10cm squares.

Also available in 2 round edges version.

Skirting or rim

This item can be used as a traditional round-edged skirting or to soften the rim of a work surface, for example.



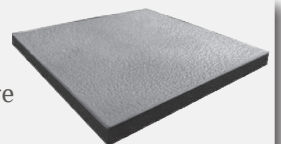
ANTISLIP 5X5/10X10CM

3-4-5

Antislip (grain of rice) R10 version of our 5x5cm and 10x10cm squares.

*Exists in one rounded edge and two rounded edges

R11 Orange Peel Version
Antislip textured 10x10cm Square
Rating: R11



5X5CM/10X10 CM STEP TREAD

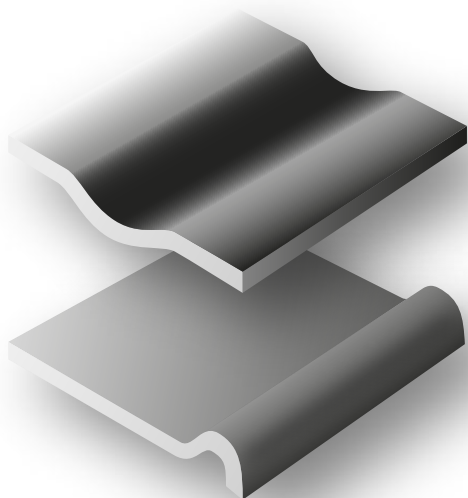
6-7

Grooved step tread for improved grip.

*Exists in one rounded edge and two rounded edges

Step visibility

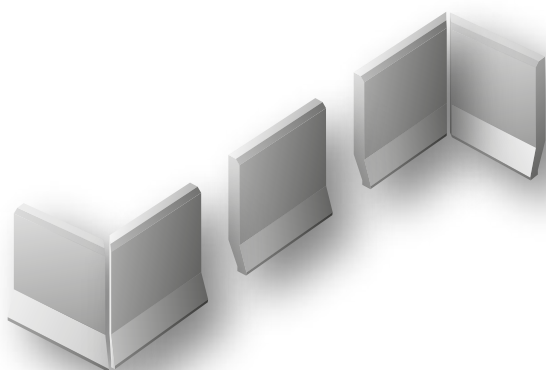
To make your steps more visible, opt for a different colour from your main surface.



SWIMMING POOL EDGE (FINGER GRIP) AND CHANNEL

8-9

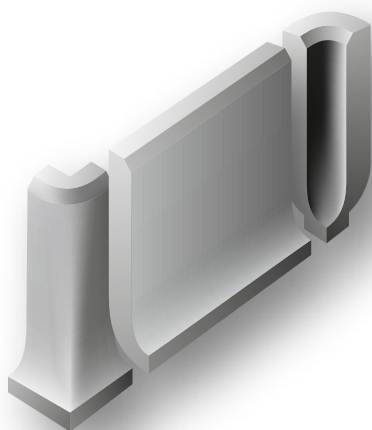
Swimming Pool Accessories.



10X10CM SIT-ON SKIRTING AND CORNERS

10-11-12

10x10cm sit-on skirtings and matching inside and outside corners.



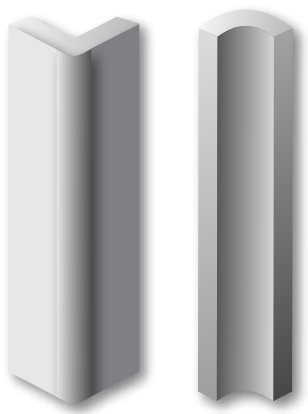
5X5/10X10CM COVED SKIRTING AND CORNERS

13-14-15

10x10cm coved skirtings and matching inside and outside corners.

Angles and sizes

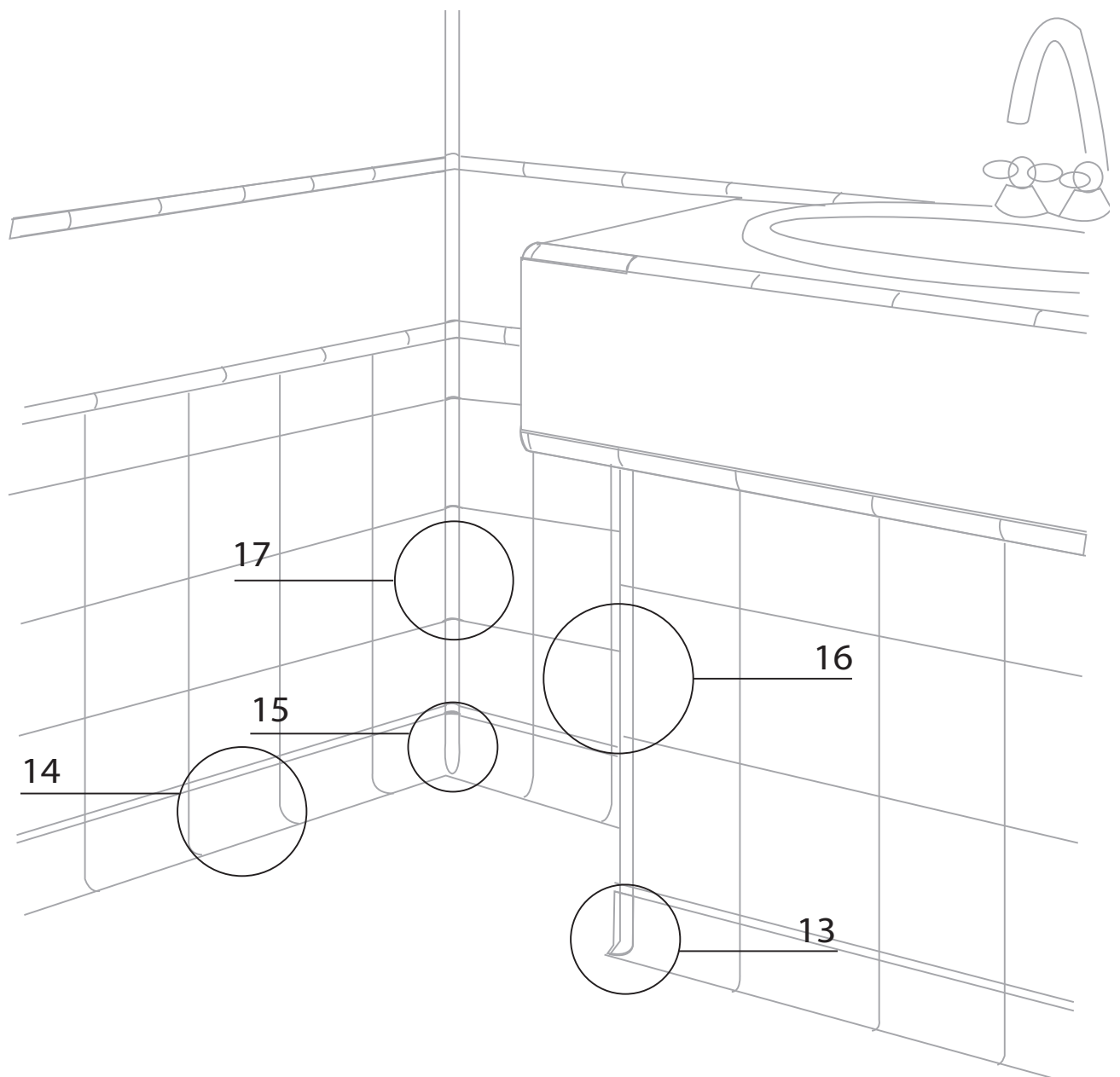
Internal and external angles are only available for our 10x10cm skirtings.



SWIMMING POOL ANGLES

16-17

Swimming Pool Angles.



Bespoke Projects

For the most unique projects

Customised service for your most specific needs

We support you throughout your project, from simple computer simulations to the most complex projects requiring the precision and know-how of our mosaicists. Be it a truly unique tile, assembly or mosaic, our creative teams can design your project.

Advanced customisation

Our flexibility and traditional production method combine to meet your demands for customised formats, textures, colours and thicknesses within a 20x20cm size limit.



WINCKELMANS
LE VRAI MILAN BAKERY



EDOUARD ANGERIE








Technical Data

DRY-PRESSED UNGLAZED (UGL) PORCELAIN STONEWARE TILES.

GROUP B1A/B1B - BRANDS AND QB/UPEC CLASSIFICATION - EUROPEAN STANDARD

Room floors are rated on the growing intensity of attacks from wear (surface abrasion), heavy traffic, water for maintenance or normal use and so-called staining or chemical products.

Details of our certifications can be found on the opposite page and valid technical data for all our tiles in the table below (the various certificates are available on request).

Characteristics	Required results	Our results
 Acid- and alkali-resistant	No altered appearance detected	No deterioration
 Variation in weight	< 1%	< 0.2 %
 Water absorption (as %)	< 0.6% (individual) ≤ 0.5% (average)	0.1% - 0.5%
 Frost-resistant after fifty frost/thaw cycles (+20°C to -15°C)	No effect	Compliant
 Resistant to thermal shocks	No deterioration	Compliant
 Resistant to deep abrasion (volume of material removed)	< 175mm ³	24mm ³
 Shock-resistant (falling ball)	No deterioration	Compliant

Quality and Antislip Standards



The full list of our UPEC ratings is available online at <https://webapp.cstb.fr/upec-ceramique/>.

Size (in cm)	Thickness (in mm)	Shape	UPEC Rating	DIN 51130 Rating	DIN 51097 Rating
1,2x1,2 cm	3,8 mm	Square	U4 P2 E3 C2	R10	C
2x2 cm	3,8 mm	Square	U4 P3 E3 C2	R10	C
5x5 cm	5 mm	Square	U4 P3 E3 C2	R10	C
10x10 cm	9 mm	Square	U4 P4+ E3 C2	R10	B
10x10 cm	11 mm	Square	U4 P4S E3 C2	R10	B
15x15 cm	9 mm	Square	U4 P4+ E3 C2	R10	B
20x20 cm	9 mm	Square	U4 P4+ E3 C2	R9	B
2,5 cm	3,8 mm	Hexagon	-	R10	C
5x5 cm	5 mm	Hexagon	U4 P3 E3 C2	R10	C
10x10 cm	9 mm	Hexagon	U4 P4+ E3 C2	R10	B
15x15 cm	9 mm	Hexagon	U4 P4+ E3 C1	R9	C
10x10 cm	9 mm	Octagon	U4 P4+ E3 C2	R10	C
15x15 cm	9 mm	Octagon	U4 P4+ E3 C2	R10	B
2,35x5 cm	5 mm	Rectangle	U4 P3 E3 C2	-	-
5x5 cm	5 mm	Antislip Square	U4 P3 E3 C2	R10	C
10x10 cm	9 mm	R10 Antislip Square	U4 P4+ E3 C2	R10	B
10x10 cm	9 mm	R11 Antislip Square	U4 P4+ E3 C2	R11	C
10x10 cm	9 mm	R12 Antislip Square	-	R12	C
15x15 cm	9 mm	R12 Antislip Square	-	R12	C

Packaging information

Particularity	Size (in cm)	Thickness (in mm)	Reference Unit	Product Type	Quantity per Box
Square	1.2x1.2cm	3.8	M2	Assembled	1.33M2
			KG	Loose	20KG/2.66M2
			Blister Pack	Loose	240G/ ≈ 200pieces
			Pot	Loose	700G/ ≈ 590pieces
			Pot	Loose	1.4KG/ ≈ 590pieces
		5	M2	Assembled	1.33M2
			KG	Loose	20KG
	2x2cm	3.8	M2	Assembled	1.33M2
			KG	Loose	20KG/2.90M2
			Blister Pack	Loose	240G/ ≈ 75pieces
			Pot	Loose	700G/ ≈ 200pieces
			Pot	Loose	1.4KG/ ≈ 440pieces
	3.5x3.5cm	9	M2	Loose	100pieces/0.12M2
	5x5cm	5	M2	Assembled	1.01M2
		9	M2	Loose	25pieces/0.06M2
	7x7cm	9	M2	Loose	25pieces/0.12M2
			M2	Loose	120pieces/0.59M2
			M2	Assembled	0.51M2
	10x10cm	9	M2	Loose	50pieces/0.50M2
			M2	Assembled	0.56M2
	15x15cm	9	M2	Loose	25pieces/0.56M2
	20x20cm	9	M2	Loose	12pieces/0.48M2
Antislip Square	5x5cm	5	M2	Assembled	1.01M2
	5x5cm	5	M2	Loose	40pieces/0.1M2
	5x5cm	5	M2	Loose	900pieces/2.25M2
	10x10cm	9	M2	Loose	50pieces/0.50M2

Packaging of accessories, decorated tiles and specific formats: please refer to the Retail Price List.

Particularity	Size (in cm)	Thickness (in mm)	Reference Unit	Product Type	Quantity per Box
Hexagon	2.5x2.5cm	3.8	M2	Assembled	1.06M2
			KG	Loose	20KG/2.5M2
		9	M2	Assembled	0.45M2
			KG	Loose	20KG
	5x5cm	5	M2	Assembled	0.83M2
			KG	Loose	44pieces/0.11M2
	10x10cm	9	M2	Loose	46pieces/0.42M2
				Assembled	0.45M2
	15x15cm	9	M2	Loose	24pieces/0.48M2
Octagon	10x10cm	9	M2	Loose	50pieces/0.50M2
	15x15cm	9	M2	Loose	25pieces/0.56M2
Rectangle	2.35x5cm	5	M2	Straight pattern	1.01M2
				Brickbond pattern	0.93M2
				Loose	100pieces/0.12M2
				Loose	800pieces/1M2
	5x10cm	9	M2	Loose	50pieces/0.25M2
	5x15cm	9	M2	Loose	20pieces/0.15M2
	2.5x15cm	9	M2	Loose	40pieces/0.15M2
	10x20cm	9	M2	Loose	25pieces/0.50M2
Isosceles Triangle	8.5x8.8x14.6 cm	9	M2	Assembled	0.38M2
			M2	Loose	40pieces/0.20M2
Basket Weave	-	5	M2	Assembled	0.92M2
Tetrix	-	9	M2	Assembled	0.41M2
Reef Knot	-	9	M2	Assembled	0.46M2
Textile	-	9	M2	Assembled	0.64M2
Eclipse	-	9	M2	Assembled	0.52M2
Honeycomb	-	9	M2	Assembled	0.50M2
Church	-	9	M2	Assembled	0.55M2

Laying and maintenance advice

LAYING TILES/TILES ON SHEETS

To achieve a uniform finish, it is advisable to open several boxes, take several sheets haphazardly and lay them randomly.

PHASE 1: CLEANING THE CEMENT FILM

Immediately after laying, the tiles are covered with a whitish film. This is normally surplus cement film introduced during grouting. These cement residues are cleaned using acid products and mechanical treatment. This operation is essential: it must be carried out initially by the tiler.

Products to be used:
Special unglazed tile cement film stripper

Method:

- Sweep the coating and eliminate the largest residues
- Moisten the joints
- Spread the product on part of the surface (treatment per area).
Leave to work for a few minutes.
- Rub the floor mechanically.
- Rinse thoroughly with water (several times if necessary) to neutralise the product and recover the cement particles.

PHASE 2 (OPTIONAL): APPLYING AN ANTI-STAIN WATERPROOFING AGENT

Although this stage is optional, it can take place a few days after laying new, clean tiles (cement film must be removed in advance without fail).

The tiles should ideally be protected to prevent staining products (grease, ink, etc.) affecting the surface of the product. For this, it is recommended to apply a waterproofing agent one to two weeks after laying. The treatment is applied to clean, dry tiles.

Products to be used:
Special unglazed tile anti-stain waterproofing agent

PHASE 3: ROUTINE MAINTENANCE

The purpose of routine tile maintenance is to keep the original appearance of the tiles as long as possible. Frequent washing is therefore necessary. The choice of detergent and the quality of the water (preferably soft) will influence the cleanliness of the tile. Linseed oil products will not normally be used as they are a source of grime on the floors.

Products to be used: Any standard alkaline product or Winckelmans cleaner.

Avoid:
Linseed oil products (grime the tile)
Never use:
HF hydrofluoric acid and by-products (damage the tile)



Important Information

SIZE VARIATIONS

The dimensions given are nominal. Given the manufacturing process and tile composition, the dimensions can be up to 1.2% larger or smaller than the manufacturing dimension.

RECOMMENDATIONS FOR JOINTS

It is strongly recommended to provide for a 2 to 3 mm joint between the different tiles. This should be filled with a grey cement grout. Coloured grouts (especially black) are strongly discouraged due to the risk of staining from their very powerful colouring agents.

OUTSIDE USE

Our tiles are ideal for outside use (hot or cold, dry or wet environments). The technical data for our tiles are available on page 74.

TILE COLOURS AND SHADES

Our tiles are made of natural products, especially clay, and shades may therefore vary for a same colour. To ensure that you receive tiles of a same shade, we suggest that you place a single order only for one and the same surface area. If, however, you need a specific shade, please contact our sales department to check availability.

As accessories and tiles are produced differently, slight variations in shade may be noted.

SAMPLES

We can supply samples to help you make your selection. Do not hesitate to contact us to obtain a shade card or specific sample. The shade of samples, although close, can vary slightly from the delivered product (See Tile colours and shades above).

ACKNOWLEDGEMENTS

We should like to thank our partners listed below for their invaluable comments in designing this brochure and for the project photos which they send us regularly:

Archtiles (Czech Republic)	www.archtiles.cz
Eco Tile Factory (Australia)	www.ecotilefactory.com.au
Greta Wolf (Russia)	www.gretawolf.ru
Herbec (Poland)	www.herbec.pl
Heritage Tile (United States)	www.heritagetile.com
Intercodam (Netherlands)	www.intercodam.com
Mosaic Assemblers (Ireland)	www.mosaicassemblers.com
Olde English Tiles Australia (Australia)	www.oldeenglishtiles.com.au
Original Features (United Kingdom)	www.originalfeatures.co.uk
Waxman Ceramics (United Kingdom)	www.waxmanceramics.co.uk
Weimashi (China)	

JOIN US ONLINE



Instagram

Facebook

Houzz

https://www.instagram.com/winckelmanstiles_official/

<https://www.facebook.com/Winckelmanstilesofficial/>

<https://www.houzz.fr/pro/winckelmans/winckelmans>

Notes

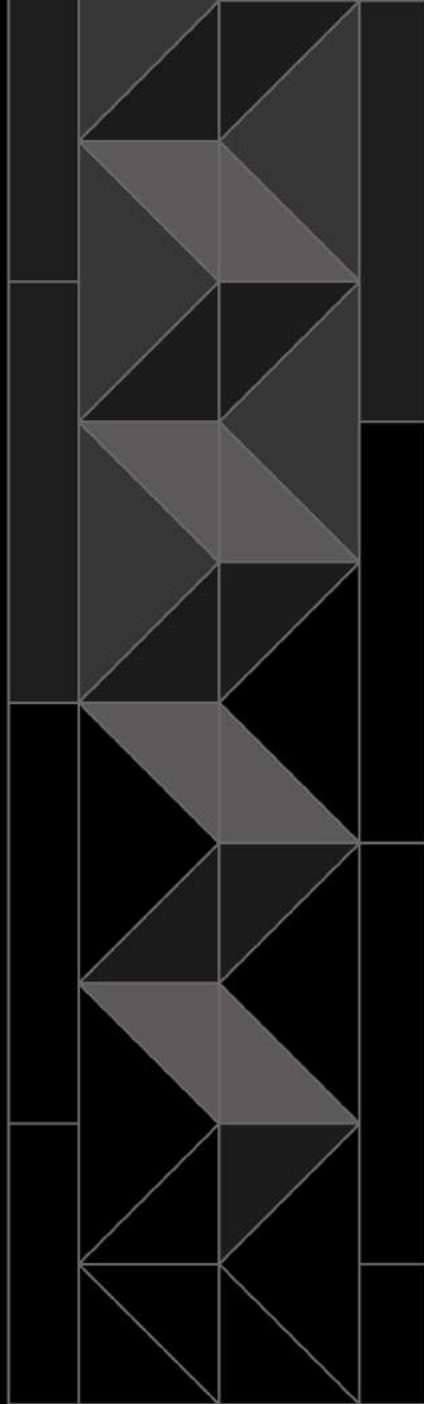
This image shows a blank sheet of white paper with horizontal ruling lines. The lines are evenly spaced and run across the width of the page. There is a dark grey header bar at the top of the page.



Handwriting practice lines consisting of 20 horizontal lines. Each line is preceded by a small blue dot, serving as a starting point for letter formation. The lines are evenly spaced and extend across the width of the page.

Notes

[illegible]



Made in France

HEAD OFFICE AND FACTORY

84 Avenue de Dunkerque - BP10147 59461 LOMME CEDEX - FRANCE

Tel.: +33 (0)3 20 92 16 54 - Fax : +33 (0)3 66 72 22 89

commercial@winckelmans.com

www.winckelmans.com

WINCKELMANS PARIS

4 Rue Bremonnier - 75017 PARIS - FRANCE

Tel.: +33 (0)1 47 63 27 97

boutiqueparis@winckelmans.com